

CHRISTELLA

MAX SPEED
32 KNOTS

CABINS
4

YEAR
2013

LOCATION
SOUTH OF
FRANCE

LENGTH
22.61M



INTRODUCTION

“Christella” is without doubt one of the most striking Sunseeker 73 Manhattan’s ever to leave the prestigious Sunseeker shipyard. Built in 2013 for an existing Sunseeker owner the brief was to maximize the vessels striking exterior lines whilst maintaining the quintessential British heritage.

Her striking black hull flows all the way to the waterline whilst her bold red boot-top line adds to the already stunning exterior detail. Matching black and red radar domes further enhance the style of the vessel and exemplify the attention to detail throughout.

“Christella” was highly specified from the outset, featuring numerous additional extras including a GRP opening hard top, extended flybridge dining arrangement, Hydraulic Rise and Fall Platform, Fin Stabilization System, Two Generators, Teak Decking on the flybridge and side decks, 55” LCD TV, Wine Cooler, Twin Washer Dryers and a Pullman Bunk in the twin guest cabin to name but a view.

Her interior was specified with the assistance of one of Sunseeker’s highest interior designer. Her Satin Black American Walnut cabinetry is complimented with Cream Leather sofa’s and soft furnishings thus creating a very prestigious feeling throughout.

Her aft cockpit features a teak table with seating for up to 8 guests alongside a wetbar that houses an electric coolbox and ice maker. As you step through the seamless sliding patio doors (no step!) we find a capacious saloon with a large lounge area for guests with a rise and fall 55” LCD TV. Further forward is a fixed dining area for up to 8 guests directly opposite the large open galley. The dinette is based around a large U-Shaped Cream leather seating area which is both practical and allows for additional storage underneath. The Galley houses a full height fridge freezer, dishwasher, microwave oven, electric hobs as well as an electric window that helps increase circulation. Forward of the dining and Galley is the helm area and the port side features another U-Shaped seating area for guests to relax whilst onboard.

CHRISTELLA





CHRISTELLA





SPECIFICATION

Builder	Sunseeker
Model	73 Manhattan
Location	South of France
Engines	2 x MAN V12 1400
Exterior Designer	Sunseeker
Length	22.61 Metres - 74 Feet
Beam	5.52 Metres - 18 Feet
Draft	1.65 Metres - 5ft
Year Built	2013
Year Launched	2013
Guests	9
Cabins	4 Cabins
Cabin Configuration	1 Master - 1 VIP - 1 Double - 1 Twin with Pullman Berth
Crew Accomodation	2
Crew Cabins	1
Hull	GRP
Classification	Pleasure Yacht
Max Speed	32 Knots
Cruising Speed	25 Knots
TENDERS	Williams 385 Jet Tender



SUNSEEKER
CHRISTELLA

COLOURS

Hull - Black
Hull Band - Jet Black
Boot Top Line - Post Office Red
Superstructure - White
Cabintetry - Satin Black American Walnut
Interior Upholstery - Light Crème/Beige
Lower Deck Flooring - Fawn Velvet
Saloon Flooring - Walnut Amtico



SUNSEEKER MANHATTAN 73 – CHRISTELLA

The lower deck is accessed via a beautifully designed curved staircase in stainless steel and American Walnut. Accommodating up to 9 guests in 4 cabins the layout of the Sunseeker 73 Manhattan is incredibly versatile. The Master Cabin is located aft and features a walk-in wardrobe an spacious Master En-Suite and shower comparable to most homes. The clever design places the Master Bed away from the engine room bulkhead thus further reducing the sound during the evening when sleeping at anchor with the generator running. The Master Cabin also boats as comfortable sofa to the starboard side and a desk/vanity area to the port side. The Large opening portholes fill the space with natural light and further enhance this already stunning vessel.

The forward VIP Cabin boasts a full height wardrobe, incredibly large portholes, vanity/desk area as well as a large En-Suite with full size shower. There is another double cabin located on the starboard side of the vessel between the master cabin and the VIP. The offset double bed is incredibly practical and makes the cabin feel extremely spacious throughout. The double cabin's En-Suite acts as the day head as well as the bathroom for the 4th Twin Cabin (featuring a 3rd single bed in the form of a Pullman bed). This incredibly practical design allows for a laundry to be located between the Master Cabin and the Port Side Twin Cabin as can be seen on the General Arrangement Diagram.

The Flybridge on "Christella" was heavily customized to allow for a very large dining area for up to 16 guests. Perfect for when there's a large number of people onboard or you just want to have space whilst you relax watching the sunset over the horizon. Another unique feature onboard "Christella" is her bow sunbathing and relaxation area which has been cleverly designed and specified so that those onboard can relax whilst facing forward due to the large seating area between the windscreen and the sunbathing area forward. The adjustable parasol provides shade on those hot days whilst the folding backrests on the sunbathing cushions makes the whole space a lot more user friendly and relaxing.

"Christella" is a truly stunning example of the Sunseeker Manhattan 73 and is without doubt the most beautiful boat on the market. For more information or to arrange a viewing of this exquisite vessel please do not hesitate to contact us.



M A S T E R C A B I N



Master Cabin - Sprung Mattress

Master Cabin - Samsung 32" LED Television

Master Cabin - Harmon Kardon BDS2 Stereo sound system with 2 x Speakers and Apple iPad/iPhone

Airport Express wireless connectivity and an Auxiliary HDMI socket

Master Cabin - Flexible Reading lights

Master Cabin - Roman Blinds instead of Curtains

Master Cabin - Pouffee Stool Upholstered in Leather

Master Cabin - Bedside Units have 3 Drawers instead of the standard cupboard

Master Cabin - Starboard Side Table next to the Sofa has 2 x Drawers instead of the standard cupboard

Master Cabin Wardrobe - 2 Brick Digital Safe



ADDITIONAL OPTIONS



GALLEY

- Bosche Hob Extractor Fan
- Ceramic Hob 240V Plastimo touch control 4 ring 240V
- Microwave oven Sharp R-86ST
- Miele 220V Slimline Dishwasher
- Miele Fridge Freezer
- Miele KM6115 Induction 4 ring hob in lieu of standard
- Electrically Operated Opening Side Window





ADDITIONAL OPTIONS

Teak Side Decks

Hydraulic Sleigher Bow Thruster and Stern Thruster with Simultaneous dual proportional controls

Hard Top in GRP with Stainless Steel supports and retractable roof canopy

Burr Walnut Console Panels

Flybridge Navigation - Raymarine E125 - 12" Colour Repeater with Ray 130 GPS receiver with 4kw 48" open scanner

Flybridge Navigation - Raymarine Autopilot System P70 Colour display

Flybridge Navigation - Raymarine i70 colour Speed and Depth Multifunctional display

Flybridge Navigation - Searchlight with Console Control

Flybridge Audio - Bose Third Zone with 4 x Speakercraft Aim8 Speakers with two Bose SA3 Amplifiers. Aux 3mm MP3 Socket and Bose PMCI remote control

Lower Aft Deck Audio - Bose Second Zone with 4 x Speakercraft Aim8 Speakers with two Bose SA3 Amplifiers and BOSE PMCI Remote Control

Lower Aft Deck - Electric Cooling unit for lower cockpit cool box

Lower Aft Deck - Ice maker

Stern Docking Winches

Glendinning Cablemaster for recovery and power feed of the AC Shorepower cable

Low Level LED Side Deck Lights - 8 Per Side

Windscreen Covers in Black Mesh

Umbrella with offset post in Black Canvas with Two Sockets on the Bow

Lewmar 50kg DELTA Anchor (Galvanised) and Additional Stainless Steel Anchor

Bow Sunbathing Cushions with Folding Backrests



Flybridge Electric Ceramic Fluted Grill

Flybridge Ice maker

Flybridge Waeco Coolmatic 80 Litre Fridge

Horn

Two 2.4 Metre Aerials on Radar Arch. 1 x VHF and 1 x FM Radio

Dynamic Positioning System for holding vessel in GPS location with the ZF JMS Joystick

Custom Aft End Flybridge seating layout - Extension to the standard layout allowing additional seating and second table

Rear Camper Covers with Windows in Black Sunbrella plus

Hydraulic Telescopic Gangway - 4.5 Metres Long with Stainless Steel and Teak Treads

Pair of Retractable Cleats for the Tender on both the port and starboard side corners of platform

Chocks on Platform for Williams 385 Tender

Fresh Water Deck Wash System

Bow Audio - 2 x Speakercraft Aim8 Marine Speakers powered with 1 x Bose SA3 amplifier allowing for Zone Control of the Saloon Bose system with the Bose PMCI Remote

Winch - Lewmar Anchor Winch

Sockets - 220V European 2 Pin

Air Conditioning - Tropical Upgrade on Chillers and Air Handlers

Saloon AV - 55" LED Television

Saloon AV - Apple iPad/iPhone Airport Express Wireless Connectivity and an

Auxiliary HDMI Socket Linked to CD/DVD System

Saloon AV - Bose Lifestyle V35 Surround Entertainment System with Samsung

Blu-Ray Player and Bose iPod Dock

Antifoul - Black
Flybridge Insturment Cover - Black
Water Purifier for Ice Maker
Navigation Equipment - Custom Black
Hydraulic Lifting Platform
Oval Mooring Cleats fitted to the lower edge of the hull band
Fin Stabilisation - Slepner
Joystick Control System (JMS) for Lower Console and Flybridge Console
Third Helm Station with JMS joystick along with Engine Start/Stop fitted in the starboard side coaming in fold our panel
Flybridge Cockpit Teak Decking



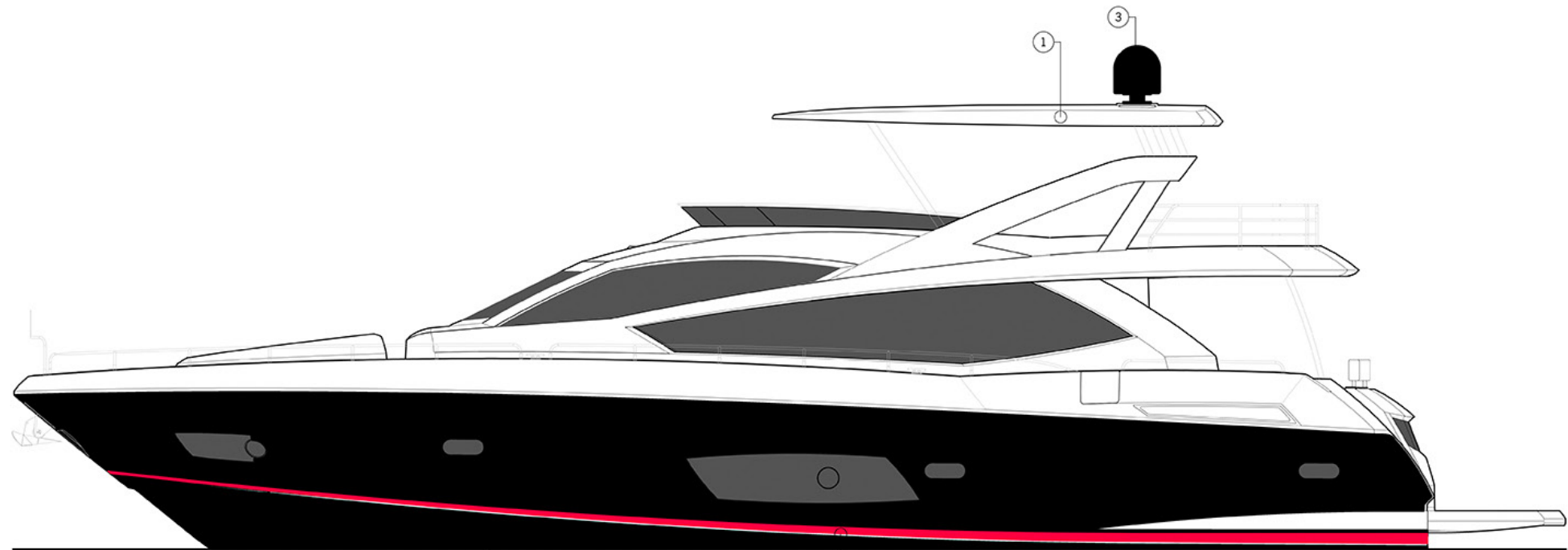
Interior Lighting - Cantalupi Square Polished LED Overhead Lighting
Main Deck Flooring - Walnut Amtico
Ottoman Stool in Saloon upholstered in Oyster Leather
Additional Storage Cupboard for Glassware fitted above the AV Unit
Saloon - Wine Cooler
Dining - Fixed Dinette seating option upholstered in Oyster Leather
Helm Station - Raymarine E125 - 12" Multifunctional Colour Radar Chartplotter on lower console
Helm Station - Raymarine Autopilot system P70 colour display
Helm Station - Searchlight - Jabsco Single Beam with console control
Helm Station - Joystick JMS Engine Control
All Internal Handrails wrapped in chocolate brown leather
Childproof Lid with key lock cover over the Switch Control Panel at the Helm station
Fire an Bilge Flood Monitoring Alarm System (7 Zones)
4 x Aqualuma Wide Angle Underwater Lights in White
Generator One - Onan 27km 50hz
Generator Two - Onan 27kw 50hz (Including Shore Power Socket)
Water Maker HRO Seafari (1,700 Litres per day capacity)

ACCOMODATION DECK

Forward Cabin - Sprung Mattress
Forward Cabin - Samsung 32" LED Television
Forward Cabin - Fusion DVD/CD/MP3/Radio tuner with Remote control linked to TV with 2 x Speakers and Apple iPad/iPhone Airport Express wireless connectivity
Forward Cabin - HDMI and USB Sockets located next to Fusion Head Unit and connected to the TV
Forward Cabin - Flexible Reading lights
Forward Cabin - Roman Blinds instead of Curtains
Forward Cabin - Pouffee Stool Upholstered in Leather

Starboard Mid Cabin - Sprung Mattress
Starboard Mid Cabin - Samsung 32" LED Television
Starboard Mid Cabin - Fusion DVD/CD/MP3/Radio tuner with Remote control linked to TV with 2 x Speakers and Apple iPad/iPhone Airport Express wireless connectivity
Starboard Mid Cabin - HDMI and USB Sockets located next to Fusion Head Unit and connected to the TV
Port Mid Cabin - Sprung Mattress
Port Mid Cabin - Samsung 19" LED Television
Port Mid Cabin - Fusion DVD/CD/MP3/Radio tuner with Remote control linked to TV with 2 x Speakers and Apple iPad/iPhone Airport Express wireless connectivity
Port Mid Cabin - HDMI and USB Sockets located next to Fusion Head Unit and connected to the TV
Port Mid Cabin - Additional Bunk fitted above the inboard berth
Crew Cabin - Separate Miele Washing Machine and Tumble Dryer





PROFILE

NO.	DATE	CHANGES FROM STANDARD	NO.	DATE	CHANGES FROM STANDARD	NO.	DATE	CHANGES FROM STANDARD
1	12-10-12	Option - GRP hardtop	11	12-10-12	Option - Dinette seating	21	12-10-12	Option - Sleigher stabiliser system
3	30-11-12	Option - Dealer supplied M9 domes in black finish	12	21-03-13	Option - Dining table top straight grain	22	12-10-12	Option - Walk in wardrobe arrangement to suit stabiliser option
4	12-10-12	Option - Black hullband	13	12-10-12	Option - Teak decking to sides & foredeck	23	12-10-12	Special - Pouffe stool with storage
5	12-10-12	Option - Post office red boot top line	14	12-10-12	Option - 55" Samsung LED TV	24	12-10-12	Option - En suite arrangement to suit stabiliser option
6	12-10-12	Option - Ceramic electric grill	15	12-10-12	Option - Additional pair of 12" oval mooring cleats	25	12-10-12	Option - Separate washing machine & tumble dryer
7	12-10-12	Option - Flybridge teak decking	16	12-10-12	Option - Wine cooler	26	05-11-12	Special - Third fixed bunk above inboard berth in port twin cabin
8	05-11-12	Special - 2 x folding fixed tables with centre gap - seating to return inboard, hinged fore & aft	17	12-10-12	Option - Sofa to be built over sole cut intrusion due to stabiliser arrangement	27	05-11-12	Option - Only 1 helmseat required
9	12-10-12	Special - Extended flybridge U-shape seating as per 8411373	18	12-10-12	Special - Ottoman stool with walnut satin tray, similar to 63 Manhattan design	28	30-11-12	Option - Umbrella with offset post in black canvas with two sockets (port & stbd)
10	12-10-12	Special - Adjustable headrests to foredeck sunbather cushions	19	21-03-13	Option - Exterior folding table	29		
			20	05-11-12	Option - Supplier Dealer supplied Williams 385 tender with checks to suit	30		

SUNSEEKER INTERNATIONAL LIMITED
SUNSEEKER HOUSE
WEST OLYMPIA ROAD, POOL
DOVER, ENGLAND
DA11 8LN
TEL: +44 (0)1323 820000 FAX: +44 (0)1323 820001
WWW.SUNSEEKER.COM

SHIP NO. 5
DATE 21.03.2013
See notes pages 12 & 19

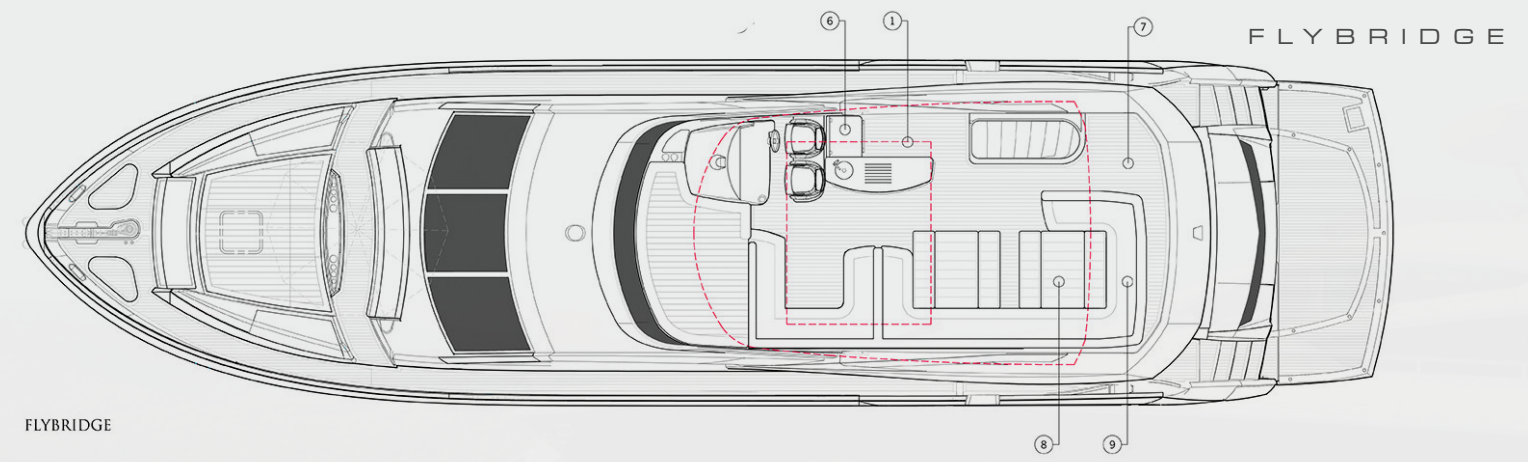
SHIP NAME MANHATTAN 73
SHIP NUMBER S154

CUSTOMER GENERAL ARRANGEMENT
S154-61-995-01

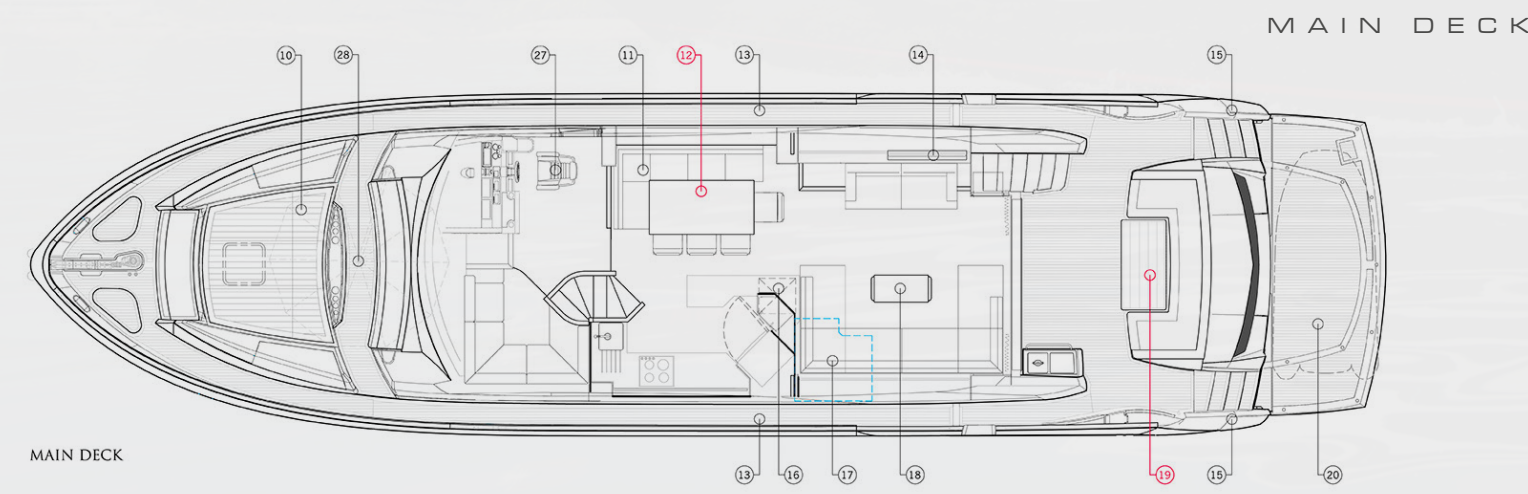
SHIP N.T.S. @ A1

1 OF 1

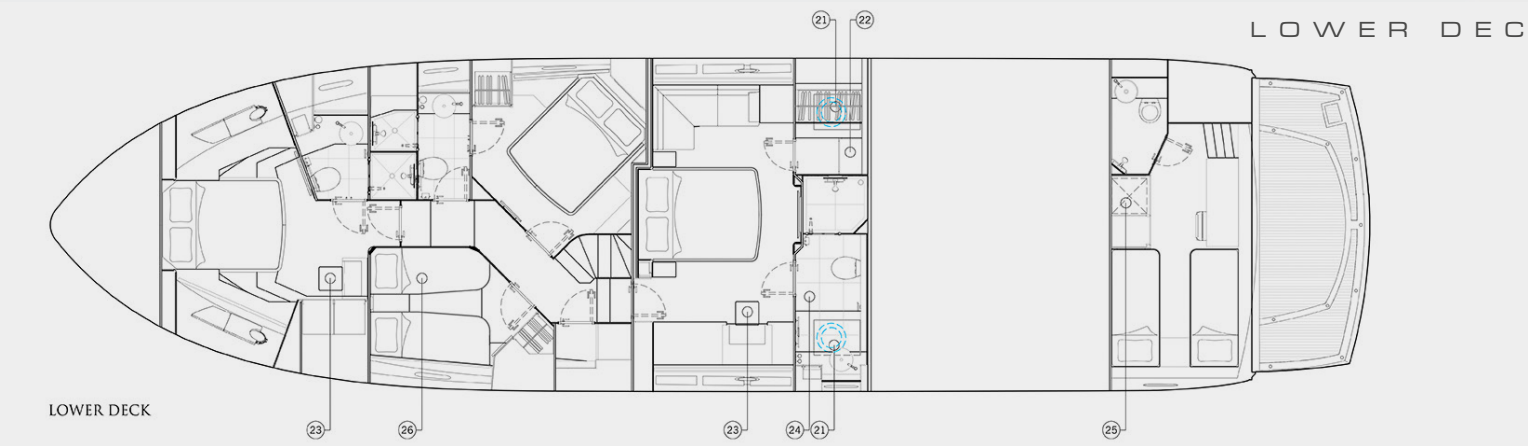
THE LAST NAME IN YACHTING



FLYBRIDGE



MAIN DECK



LOWER DECK

CHRISTELLA

CHRISTELLA



BRISTOW
HOLMES

harry@bristow-holmes.com

Tel. +44 7881 29 74 75

www.bristow-holmes.com

London - Dubai - Miami - Monaco - Palma - Singapore - Sydney