

# VOLPINI

BUILDER  
AMELS

CABINS  
5

REFIT  
2014

YEAR  
2004

LENGTH  
49.30M



PASSION | PERFECTION | PERFORMANCE

AMELS 

  
BRISTOW  
HOLMES



# INTRODUCTION

**Bristow-Holmes** is proud to represent the stunning 49.3 Metre Superyacht VOLPINI (ex Larissa). Built by renowned Dutch Superyacht builder AMELS in 2004 and completely refitted at the same yard in 2014. **VOLPINI** is an outstanding vessel, built to the highest standard at one of the worlds most recognised shipyards.

**Superyacht VOLPINI** features a luxurious and elegant interior offering spacious entertaining and socialising areas thanks to her Donald Starkey design both inside and out.

VOLPINI accommodates up to 12 guests across 5 cabins. Her main deck master cabin boasts a large en-suite marble bathroom, his and hers walk in dressing rooms, private office and direct access to the owners private deck area. Below deck are a further two twin cabins and two double guest cabins along with an additional two Pullman berths (one in each twin cabin)

VOLPINI accommodates up to 12 crew across a private captains cabin and five further crew cabins.

VOLPINI is powered by twin MTU 12V 2000 M70 engines which propel her to a maximum speed of 14.3 knots and a comfortable cruising speed of 12 knots. With a range of 4000 nautical miles at cruising speed she is a truly transatlantic vessel.

VOPINI benefits from an extensive 2014 Refit at AMELS Shipyard in Holland. The 2014 refit included a full exterior repaint, interior customisation, machinery and electronics updates.

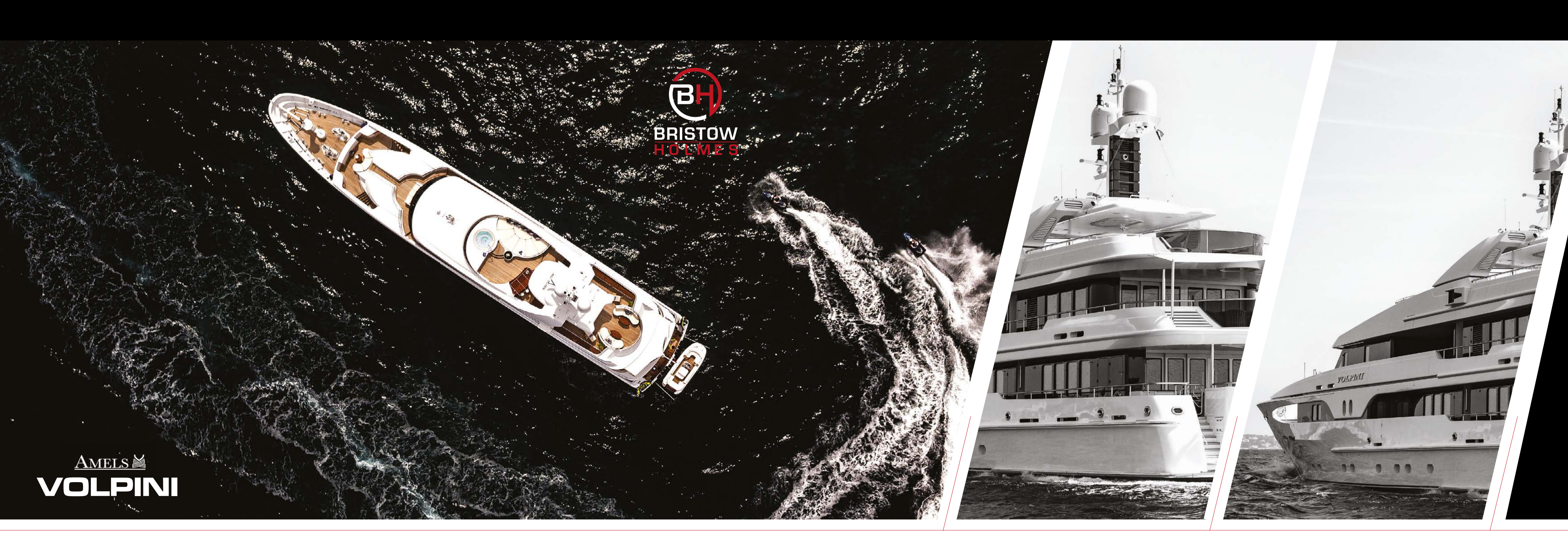
For more information please do not hesitate to contact Bristow-Holmes "The Last Name in Yachting"

AMELS   
**VOLPINI**

  
**BRISTOW  
HOLMES**







BRISTOW  
HOLMES

AMELS  
VOLPINI





## SPECIFICATION

Builder	Amels (Holland)
Year Delivered	2004
Refit	2014 carried out at Amels including full repaint
Classification	Lloyds Register of Shipping +100A1, SSC Yacht Mono G6 +LMC UMS 10 year Lloyds Survey completed July 2014 Lloyds Intermediate Survey completed May 2016
Sales Tax Status	VAT Not Paid

## CONSTRUCTION

Hull	Steel
Superstructure	Aluminium
Deck	Teak
Type	Displacement Yacht
Built in	Holland
Interior Designer	Donald Starkey Design
Ext. Designer	Donald Starkey Design

## DIMENSIONS

Length overall	49.3 metres	161'9" Feet
Length waterline	43.59 metres	143'0" Feet
Beam	9.25 metres	30'4" Feet
Draft	3.3 metres	10'10" Feet
Gross Tonnage	659 tons	
Net Tonnage	197 tons	
Displacement	566 tonnes	557 Tons
Fuel Tanks	93,200 Litres	24,621 US Gallons
Water Tanks	21,200 Litres	5600 US Gallons
Other Tanks	Lube oil capacity 4,000 litres Waste oil capacity 7,200 litres	





## GENERAL DESCRIPTION OF VOLPINI

Volpini has only ever been used privately since her delivery. She benefited from professional project management throughout her construction period and since delivery has always had a full complement of crew on board. Volpini has been exceptionally well maintained with sufficient funding at all times to ensure she is kept in fantastic condition.

This is a custom yacht design differing from the “Tigre d’Or” series of the same era. Volpini’s tenders for example are carried port and starboard on the bridge deck so freeing up the exterior deck areas for the guests. Her sun-deck is particularly impressive and features Jacuzzi, bar, built in sunbeds, a huge shaded dining table and comfortable lounging areas.

The Donald Starkey designed interior of the yacht was executed by Metrica. Between them they created a light, comfortable interior for this voluminous yacht which is nevertheless sophisticated in execution. The owner’s cabin comprises a private sitting room, a double cabin with direct access to a private deck area on the foredeck, twin dressing rooms and a large en suite bathroom. Two twin and two double guest cabins are located on the lower deck. Each twin cabin is fitted with an additional pullman berth.

Volpini was constructed in order to comply with the Cayman Island regulations for commercial yachts and she could be certified for a charter operation with very little if any, further investment.









A C C O M M O D A T I O N



King Cabins	1
Double Cabins	2
Twin Cabins	2
Additional Berths	2
Total Guest Berths	12
Number of crew cabins	6
Total Crew Berths	12





GENERAL ACCOMMODATION DESCRIPTION



- Owner

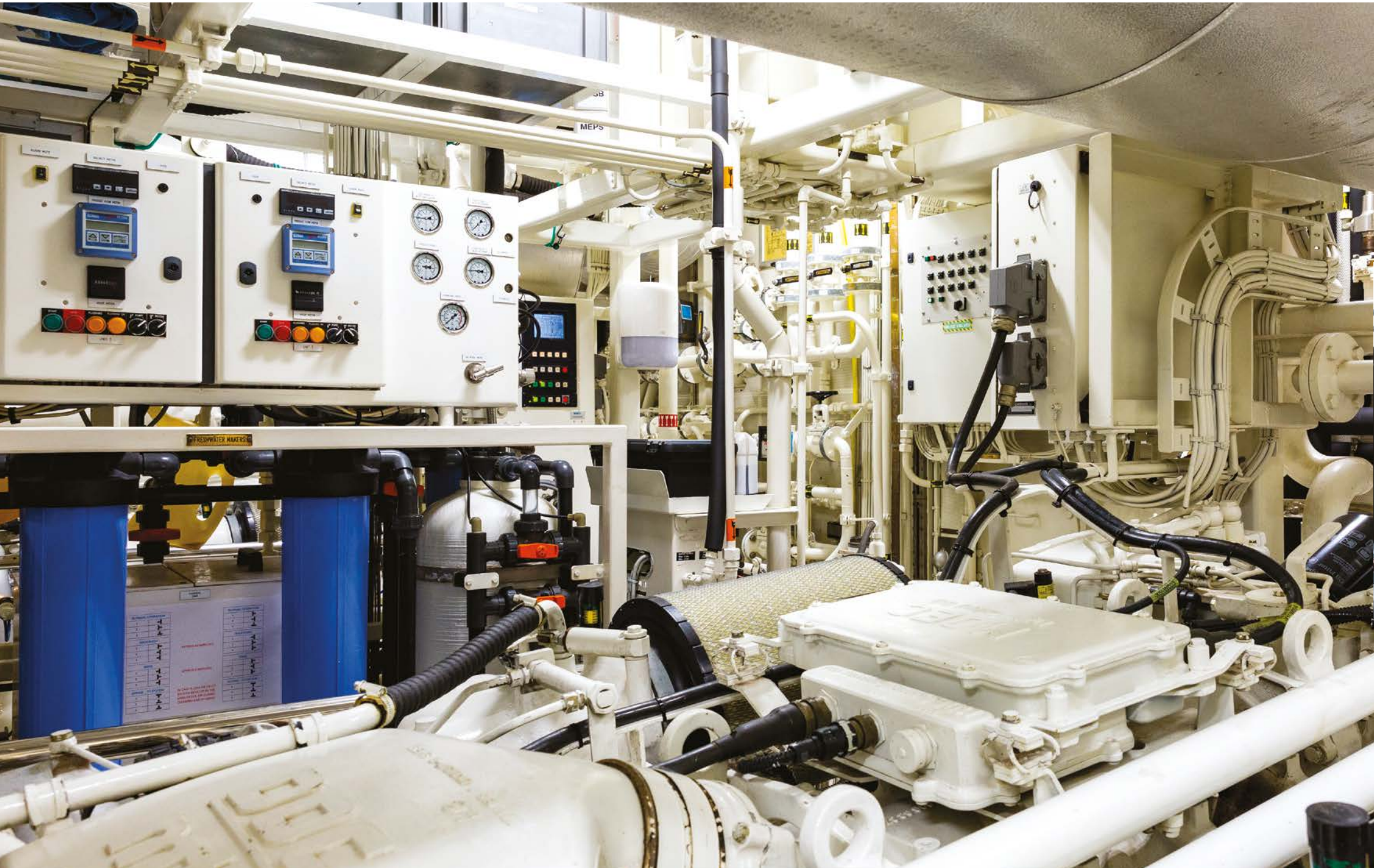
The owners suite is located on the main deck with direct access to a private deck area forward. It consists of a private saloon, sleeping cabin with king size bed, dressing table and sofa, his & hers walk in dressing rooms and a large en suite bathroom.
- Guest

On the lower deck two large VIP guest suites with queen size island berths and ensuite bathroom. Two twin cabins each with ensuite bathroom and additional pullman berth.
- Crew

Accommodation for captain and 10/11 crew in six cabins







ANCILLARY MACHINERY

Stabilizers	Koopnautic 4080 5VA at sea and at anchor stabilisers
Zero Speed	Yes
Water Makers	2 x HEM series 30
Air Conditioning/heating	Heinen Hopman Salor 180 system
Bow Thruster	HRP 2001 TT 100 Kw
Fuel Filtration	Alfa Laval P100 fuel separator
Sewage System	Hamman HL CONT
Propellers	2 Lips 5 blade highly skewed outward turning propellers
Other	Idea planned maintenance system

MACHINERY

Main Engines	2 MTU 12V 2000 M70
Propulsion Power	1057 HP 788 kW
Engine Hours	Port 6626 hrs (08/09/17) Starboard 6609 hrs (08/09/17)
Fuel Type	Diesel
Drive Type	Conventional
Gear Box	Reintjes WAF 464L 5.042:1 reduction
Maximum Speed	13.8 knots
Range at Maximum Speed	2670 nautical miles *



ELECTRICAL SYSTEMS

Electrical Power	400 v 50 Hz
Shore Power	400 v 50 Hz
Batteries	24 v
Generators	2 x Caterpillar 200KVA 3306B 1 x Caterpillar 75 KVA 3054T 65 Hours (08/09/17)
Generator Hours	Starboard 9534 (08/09/17)      Centre 9643 (08/09/17)
Other	Magnus 150 Kva shore power convertor

Fuel Consumption at Maximum Speed	390 LPH **
Cruising Speed	11.7 knots
Range at Cruising Speed	4050 nautical miles *
Fuel Consumption at Cruising Speed	210 LPH **
Economical Speed	10.2 knots
Range at Economical Speed	5000 nautical miles *
Fuel Consumption at Economical Speed	155 LPH **

\* with 15% reserve    \*\* including one generator



OTHER DOMESTIC EQUIPMENT

TANK DECK

- 1 x Walk in refrigerator
- 1 x Walk in freezer
- 1 x Walk in garbage refrigerator

MAIN DECK PANTRY

- 1 x Gaggenau wine refrigerator (approx 144 bottle)
- 1 x Foster freezer
- 1 x Hobart dishwasher/sanitizer
- 1 x Foster ice maker

UPPER PANTRY

- 1 x Foster ice maker
- 1 x Miele domestic refrigerator

CREW MESS

- 1 x Foster upright refrigerator
- 1 x Hobart dishwasher/sanitizer
- 1 x Panasonic microwave
- 1 x Water filtration unit for drinking water

OTHER

- 1 x Refrigerator in each of the two bars
- 1 x Refrigerator on sundeck
- 1 x Foster ice maker on sundeck
- 2 x Guest refrigerators (owner's cabin & guest lobby)
- 1 x Foster refrigerator on main deck aft



AUDIO VISUAL

Centralised rack mounted audio video system  
Seatel at sea antenna (Med/USA/Caribbean capable) wth satellite  
TV to all guest areas and crew mess  
Flat screen televisions in owner's cabin, owners sitting room, guest cabins, both saloons and crew mess  
Audio/video on demand system in owners cabin and saloons  
iPad Mini controls (Orca software) for AV in all locations.

SAFETY & SECURITY

SAFETY

- 4 x Surviva RFD 16 person liferafts
- 1 x Surviva RFD 6 person liferaft
- 1 x ACR Category 1 406 MHz EPIRB
- 45 x inflatable Lifejackets
- 8 x Rigid child Lifejackets
- 8 x Lifebuoys (two with lights, two with smoke & lights, four with line)
- 24 x Immersion suits
- 5 x Draeger EBD smoke masks

FIRE FIGHTING

- Marioff Hi-Fog system
- Two piece Fireman's suits with boots, helmets, hoods and gloves
- 2 x Draeger universal SCBA plus 4 spare cylinders

ALARMS

- Eltek ANX 95 Fire Alarm system
- Kahlenberg general alarm

SECURITY

- 7x exterior CCTV Cameras with monitoring displays in wheelhouse and crew's mess
- Safes in all guest cabins and in Captain's cabin

NAVIGATION

- Transas NaviSailor ECS with Slave
- 1 x Furuno Navtex
- 1 x Sperry Marine/Northrop Gummman Magnetic compass
- 1 x Anschutz STD22 Gyro compass
- 1 x Comnav G2 Navigator GPS compass
- 1 x Sperry Navipilot 4000 autopilot
- 1 x Skipper GDS102 colour display echo sounder
- 1 x Simrad MX610 GPS
- 1 x Furunro GP 32 GPS
- 2 x FR-2115 B Series X-band ARPA Radars
- 1 x SAAB AIS Unit linked to Transas display
- 1 x Furuno BWNAS with motion detector and remote alarm panels in Crew Mess and Captain's Cabin
- 1 x Barigo Barometer
- 1 x B & G HYDRA 2000 Performance measuring system

WHEELHOUSE

- MTU Monitoring and Plaxis Alarm monitoring display
- 2 x Datamation displays for ECS - central server
- 2 x Radar display screens





OFFICE EQUIPMENT

FULL SHIP'S COMPUTER NETWORK INCLUDING:

- 1 x Rack mounted ship's computer server with monitor
- 1 x Lenovo laptop (Interior Dept)
- 1 x Dell laptop (Deck Dept)
- 1 x Dell PC with 20 inch screen (Captain)
- 1 x Fijitsu Siemens PC (Engineering Dept)
- 1 x A3 Laser Printer
- 1 x Epson A4 scanner/printer (Captain)
- 1 x Epson A4 scanner/printer (Crew Mess)
- WIFI throughout vessel
- LAN plugs throughout ship

COMMUNICATION EQUIPMENT

- 2 x Sailor VHF – one with DSC both with handsets
- 2 x Handheld GMDSS VHF radios with spare batteries
- 2 x SART
- 1 x Inmarsat C EGC receiver/ship earth station with Sailor LRIT
- 1 x Thrane & Thrane satellite telephone
- 1 x PABX telephone/intercom system
- 1 x Phonotech Paging Unit (Loudhailer)
- 1 x Sailor 900 system for internet broadband (VSAT)
- 1 x Pepwave 3G router



DOMESTIC EQUIPMENT

GALLEY

- All professional galley equipment:
- 1 x 6 shelf MKN Combi-Steam oven
- 1 x MKN Deep fryer 12 L
- 4 x MKN induction hobs
- 1 x MKN wall mounted salamander
- 1 x MKN flat plate grill
- 1 x MKN underbench oven
- 1 x Panasonic Combi-Microwave oven
- 1 x Hobart underbench commercial dishwasher
- 1 x Foster twin door full height refrigerator
- 1 x Under bench refrigerated unit - 2 door, 3 drawer
- 1 x wall to wall extractor hood
- Pro-line faucets with spray heads

LAUNDRY

- 1x Miele large professional commercial washer
- 1x Miele large professional commercial dryer
- 1x Miele small commercial washer
- 1x Miele small commercial dryer
- 1x Sheet roller ironing machine
- 1x LauraStar ironing machine

DECK EQUIPMENT

- 10 x F11 Fenders
- 4 x A6 Fenders
- 3 x F7 Fenders
- 10 Flex laid braided nylon mooring lines of various lengths
- 1 x 100m towing line

GROUND TACKLE

- 2 x 430 Kg galvanised anchors
- 2 x 7.5 shackles of 20.5mm anchor chain

CRANES/DAVITS/PASSERELLES

- 1 x fixed crane on foredeck for jetski launch
- Overhead davits on upper deck for tender launch
- 1 x 6m Cramm Riviera hydraulic/electric gangway
- 1 x Cramm hydraulic/electric side boarding ladder on starboard side
- 1 x Cramm SMST type Jet-Ski Crane in Lazarette

WINCHES

- 2 x Steen vertical anchor windlasses
- 2 x Steen mooring capstans

OTHER GENERAL INFORMATION

ANTIFOULING APPLICATION APRIL 2016

All Main Engines and Generators have been serviced according to the manufacturer's recommendations and performed by Manufacturer Certified Technicians.  
Port Main Engine W4 Service date = August 2016 by MTU in Spain (hours = 5250)  
Stbd Main Engine W4 Service date = August 2016 by MTU in Spain (hours = 5247)  
Stbd Generator Top End Rebuild in April 2017 by Caraibes Diesel Services in St. Maarten  
Magnus Shore Power 175KVA SP200 installed in 2013 during refit in Amels, Holland  
Magnus PCS100 Module changed and general service in April 2017 in St. Maarten

- Addendum 1
- Addendum 2

- Volpini Inventory list (upon request)
- Amels Refit Specification R44501 (upon request)

TENDERS & SPORT EQUIPMENT

TENDERS

- 1 x 21 ft. Castoldi jet tender – Delivered 2016
- 1 x 14 ft Castoldi jet tender (SOLAS)

JET SKIS

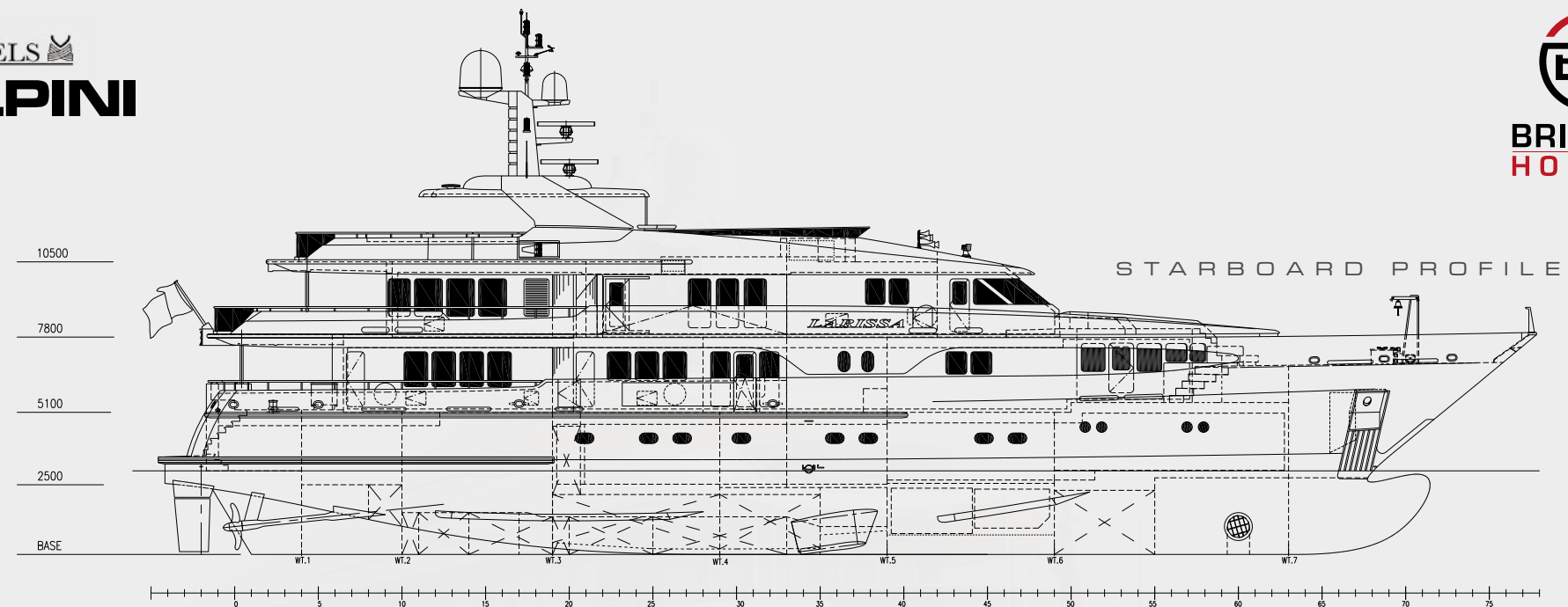
- 2 x Seadoo 155 GT waverunners

LEISURE & FITNESS

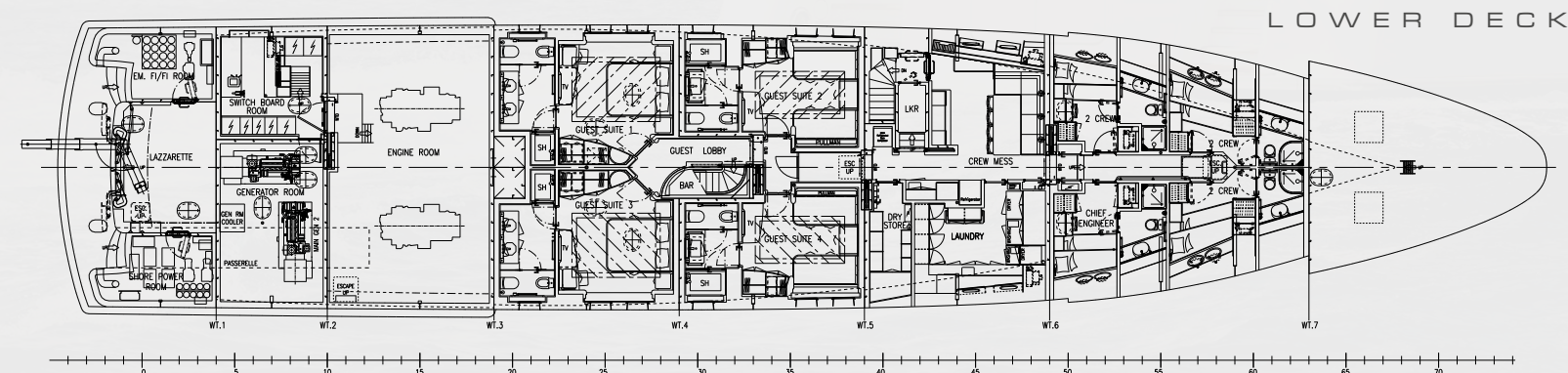
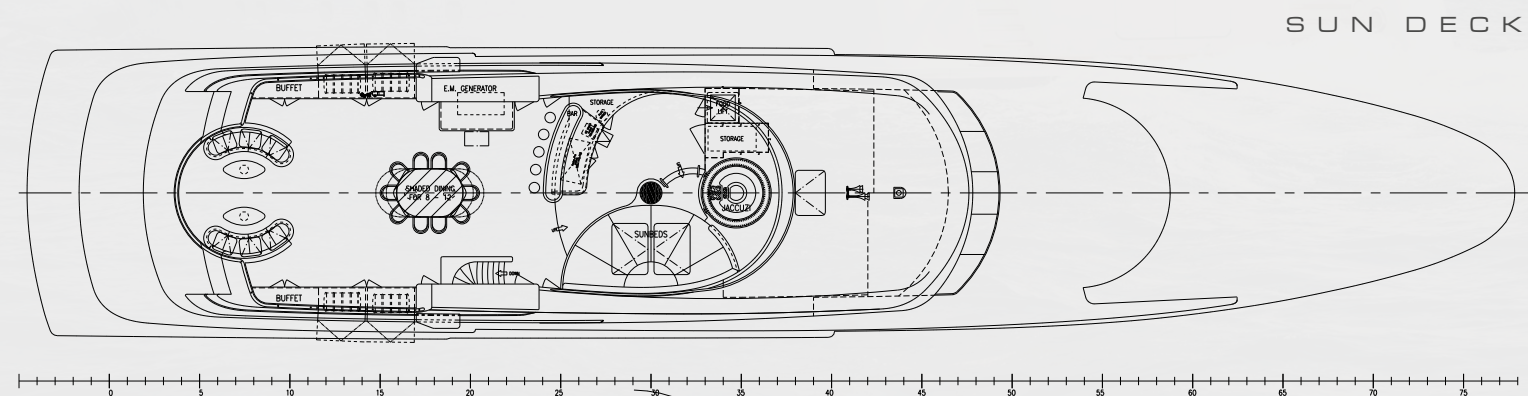
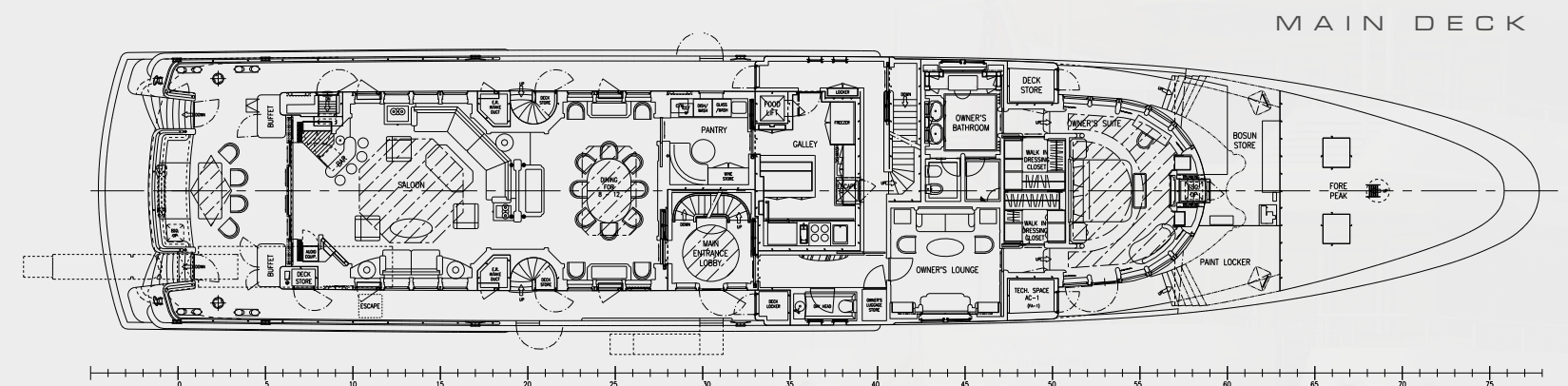
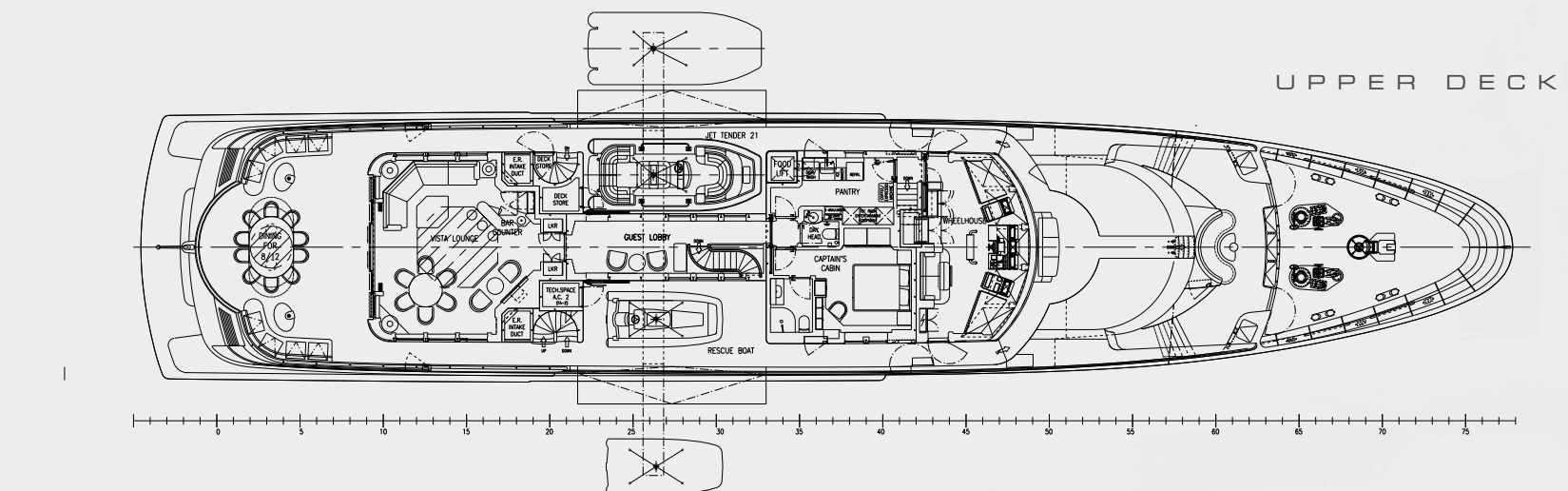
JACUZZI

- Hellbrekers Jacuzzi on Sundeck





PASSION | PERFECTION | PERFORMANCE





# VOLPINI

AMELS 



BRISTOW  
HOLMES

[harry@bristow-holmes.com](mailto:harry@bristow-holmes.com)

Tel. +44 7881 29 74 75

[www.bristow-holmes.com](http://www.bristow-holmes.com)

London - Dubai - Miami - Monaco - Palma - Singapore - Sydney



SCAN TO WATCH VIDEO  
<http://www.vimeo.com/bristowholmes/volpini>