

S U N S E E K E R  
**PROVIDENCE**

MAX SPEED  
30 KNOTS

CABINS  
4

YEAR  
2015

LOCATION  
SPAIN

LENGTH  
26M



# INTRODUCTION

Bristow-Holmes is proud to present the stunning Sunseeker 86 Yacht "Providence". Fitted with 2 x MTU 10 V 2000 M94's and priced to sell at £3,650,000 EU VAT PAID she won't be on the market for long.

Built in 2015 for her highly experienced owner, the Sunseeker 86 Yacht has quickly become one of Sunseeker's most popular models. With the entire 2018 production already sold "Providence" represents a unique opportunity to beat the waiting list.

The Sunseeker 86 Yacht is the smallest Yacht in the Sunseeker range to offer both a Hydraulic Bathing Platform and drop-down balcony off of the saloon. "Providence" was designed in true Sunseeker fashion. With Satin Walnut Cabinetry throughout complimented with cream upholstery, hardwood flooring and light-coloured carpets.

"Providence" boasts a number of upgrades over the standard specification. From Fin Stabilizers to Twin Generators, Carbon Fibre Hard Top to the Extended Flybridge Sun pad. Her striking white hull compliments the extensive panoramic glass windows perfectly.







## SPECIFICATION

Builder	Sunseeker
Model	86 Yacht
Location	Spain
Engines	2 x MTU 10V 2000 M94
Year	2015
Exterior Designer	Sunseeker
Length	26 Metres / 86'
Beam	6.47 Metres / 21'
Draft	1.95 Metres / 6' 5"
Year Launched	2015
Guests	8
Cabins	4
Cabin Configuration	1 Master - 1 VIP - 2 Twins
Crew Accomodation	4
Crew Cabins	2 x Twin Crew Cabins
Hull	GRP
Classification	MCA Compliant
Max Speed	30 Knots
Cruising Speed	22 Knots

## TENDERS

Williams TurboJet 445



SUNSEEKER  
**PROVIDENCE**

## COLOURS

Hull - White  
Hull Band - White  
Boot Top - Jet Black  
Superstructure - White  
Hardtop - Carbon Black  
Coach Roof - Satin Black  
Cabinetry - Black American Walnut with Satin Finish  
Interior Upholstery - 7 Shaded White





## SUNSEEKER 86 YACHT – PROVIDENCE

This Sunseeker 86 Yacht features 4 x En-Suite Cabins. A full beam Master Suite located amidships, Forward VIP Cabin and 2 x Twin Aft Cabins with Sliding beds that convert from singles to doubles with ease.

“Providence” was built with both inside and outside entertaining in mind. The large flybridge bar acts as the centrepiece for socialising whilst the drop down balcony is the perfect place for watching the world go by.

For more information including full layout, factory specification and high resolution photographs and video please do not hesitate to contact Bristow-Holmes, “The Last Name in Yachting”





M A S T E R C A B I N





ADDITIONAL OPTIONS



GALLEY

Miele Electric Oven
Miele Full Size Dishwasher
Miele HI-Light Ceramic Hob
Miele Microwave
Subzero Fridge Freezer with Integrated Ice Maker
Bosch DHL535B Hob Extractor Fan

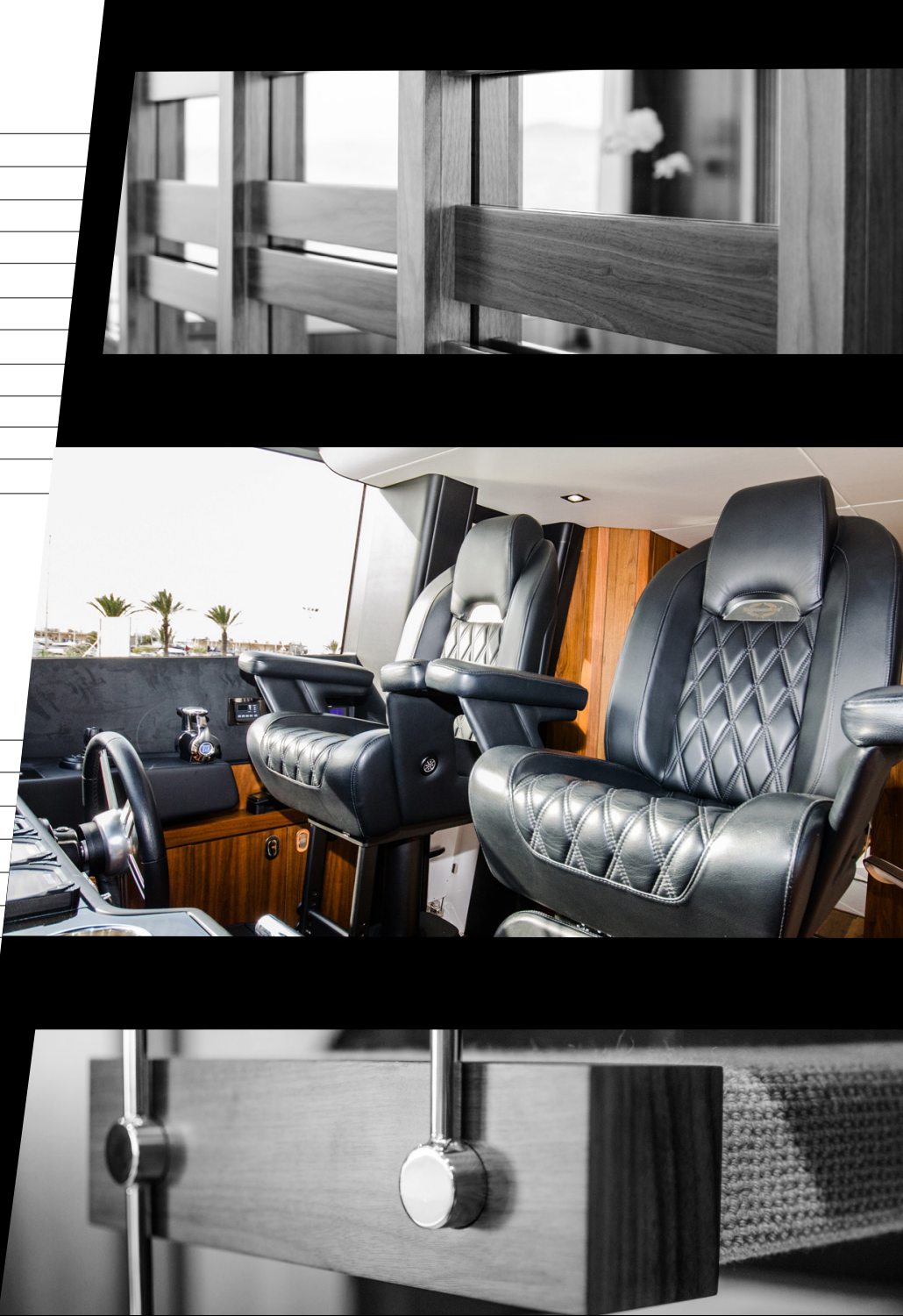


NAVIGATION UPGRADES

Simrad NS0 Processor with Simrad OP40 Controller
Three x Hatteland 'System X' 19" Glass Bridge Displays (Repeated on Flybridge)
Simrad TX010S High Definition Digital Open Scanner Radar (6Ft 10kW)
Simrad GS25 GPS Antenna.
Simrad Autopilot system with control from QS80 Joystick and IS40 Display (Repeated on Flybridge)
Simrad IS40 Multifunction Instruments X 2 (Repeated on Flybridge)
Simrad BSM-1 Sounder Module with Speed/Depth Transducer
Simrad VHF with DSC. (Repeated on Flybridge)
Simrad Class B AIS Transponder with GPS Reciever
Simrad Wireless access control for iPad
Dynamic Positioning System with ZF JMS
Joystick Control System

AV EQUIPMENT

iPad	- System Orca wireless AV and Lighting control system
Saloon	- Samsung 6200 55" LED Television on Rise and Fall Mechanism
Saloon	- Beolab 14 Speaker system, Blu-Ray Player and Airport Express
Flybridge	- 6 Bang & Olufsen Amplified Speakers, and Sub Zone
Aft Cockpit	- 4 Bang & Olufsen Amplified Speakers
Foredeck	- 2 Bang & Olufsen Amplified Speakers
Master Cabin	- Samsung 40" LED Television, Harmon Kardon Head Unit, Flush Mount Speakers
Master Cabin	- Samsung 40" LED Television, Harmon Kardon Head Unit, Flush Mount Speakers
Master Cabin	- Apple iPad/iPhone Airport Express & Auxilliary HDMI Input
VIP Cabin	- Samsung 40" LED Television, Harmon Kardon Head Unit, Flush Mount Speakers
VIP Cabin	- Apple iPad/iPhone Airport Express & Auxilliary HDMI Input
Twin Cabins	- Samsung 22" LED TV, Harmon Kardon Head Unit, Flush Mount Speakers
Twin Cabins	- Apple iPad/iPhone Airport Express & Auxilliary HDMI Input
Superyacht System' Intruder Alarm with Sensors at all access areas, CCTV with 3 Cameras. (2 Infrared Camera's in the engine room & 1 Facing aft for mooring)	
'Future Proof' CAT 5e Cabling to all areas.	





DECK EQUIPMENT

Full Teak Decking
Teak Table ‘V’ Groove, Fixed top on Stainless Steel Legs
Besenzoni Hydraulic Passarelle
Hydraulically lifting Swim Platform, with 650kg lifting capacity
Hand Held fresh water shower
Aft cockpit Waeco Fridge & Cool Chest
Aft Cockpit Engine Control System (With Engine throttles, stop/start and Thruster control)
Aqualuma Underwater Lights, LED Wide Angle - Stern x 4, Port & Starboard x 2
Flybridge Console in Piano Black
Flybridge Extended Sunpad, Carbon Fibre hardtop with Retractable Canopy in Jet Black
Flybridge Aft Extending Canopy
Flybridge Seating, Sunpad, Table and Helm Seat Covers all in Sunbrella Plus - Silver 5035
Searchlight - Sanshin Twin-Beam
Stainless Steel Ensign Flagstaff
Fully operational Wetbar & 3 Stainless Steel Stools
2 x 24v Lewmar Winches
Horn - AFI Dual Trumpet
Balcony on Starboard Main Deck
Victofrigo Classic Icemaker with Water Purifier
Kenyon Electric BBQ Grill
Stainless Steel Parasol with Posts & Sockets on Foredeck, Silver/Grey Shade colour
Twin Anchor Arrangement at Bow with 2x Lewmar V8 Windlass, 80kg Anchor & 100m Chain, 50kg Anchor & 60m Chain
Full ‘Winter’ Covers, Windscreen Mesh and stern ‘Camper’ covers
Fresh Water Marina Connection (With Regulator)
Fresh Water deck outlet
Aft Cockpit Covers with Windows & Table/Seating & Sunbather covers in Sunbrella Plus Silver
Companionway Hatch from Aft Cockpit to Flybridge
Simrad 15” Displays x 2
Simrad Autopilot System
Simrad Multifunction Instruments x 2 (Displaying speed, depth and compass)
Simrad VHF with DSC
Stern ‘Spring’ Cleats on Aft Edge of the Hull



INTERIOR SPECIFICATION

- Saloon Flooring - American Walnut brushed border, with ‘Natural Line’ carpet
- Shimmer ‘Polar White’ Headlining Panels throughout
- Black American Walnut Cabinetry & Bulkheads throughout
- Polished Chrome Bezel overhead lighting
- Sofas & 2 x Ottoman stools with ‘Loro Piana’ shaded fabric & Walnut Feet
- Classic Vimar switches updated with Black Chrome surrounds
- Main Deck Dayhead Upgrade
- Special ‘Black American Walnut Fretwork’ Dining room bulkhead, with bespoke mirror detail.
- Sprung Mattress’ on all Beds
- Starboard Sliding Door leading to Balcony

CREW MESS

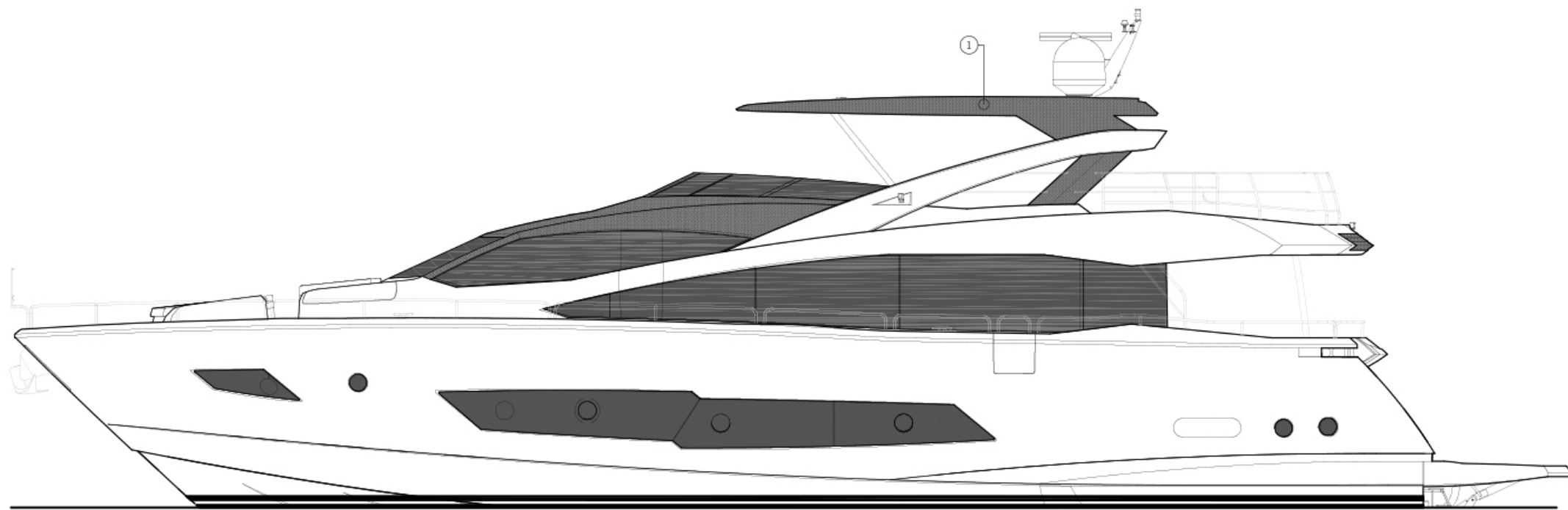
- Waeco CR1080e Refridgerator
- Miele W1613 Washing Machine
- Miele T8722 Tumble Dryer
- Samsung 22” LED TV
- Fusion CD/Radio & Flush Mount Speakers

ENGINEERING UPGRADES

- Bow & Stern Thruster Upgrade - Sleipner
- CMC Fin Stabilisation system, operational underway & at rest
- Kohler 28kW 50Hz & Kohler 33kW 50Hz Generators
- Glendinning Cablemaster, Power Feed & Recovery AC Cable
- Oil Change System for Main Engines & Generators
- Seamless Transfer Inverter to allow for uninterrupted switching between Generator & Shorepower
- Black Antifoul
- Fuel Polishing System
- Upgraded ‘Tropical’ Air Conditioning
- Isolation Transformer
- Standby Fresh Water Pump - With additional pick-up & strainer feed from tank to main circuit.

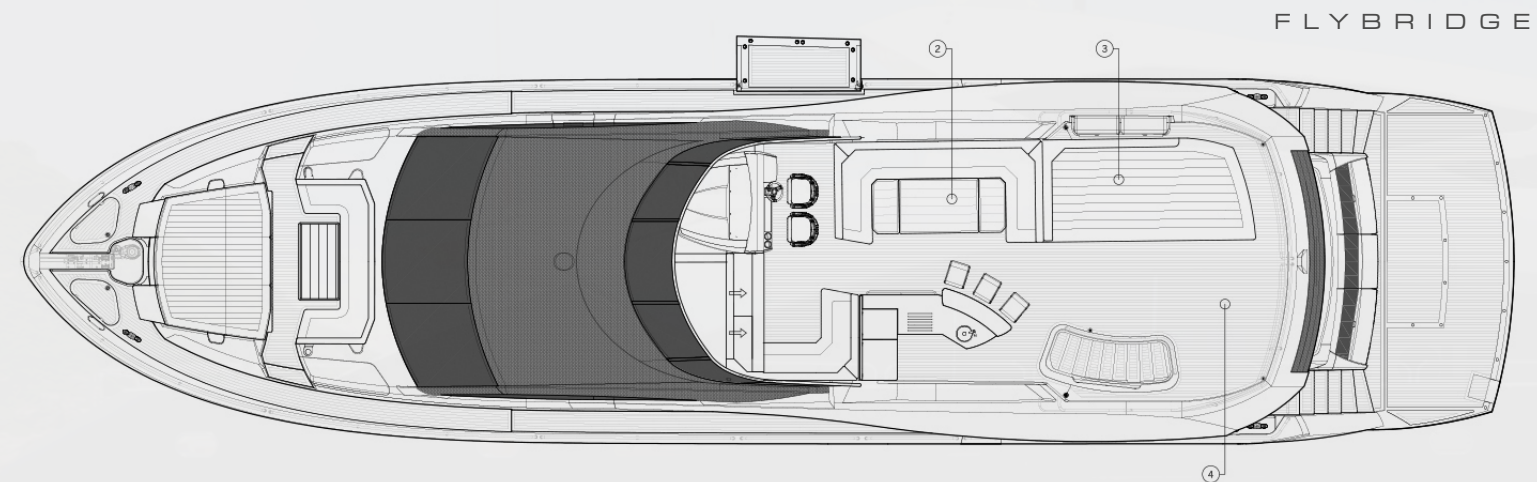




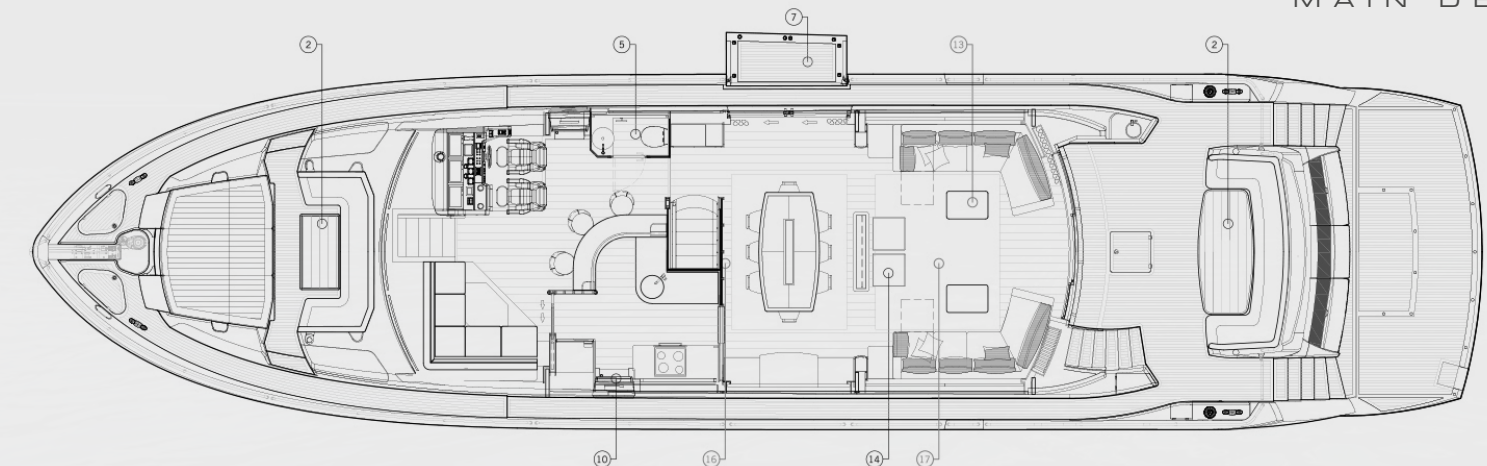


PROFILE

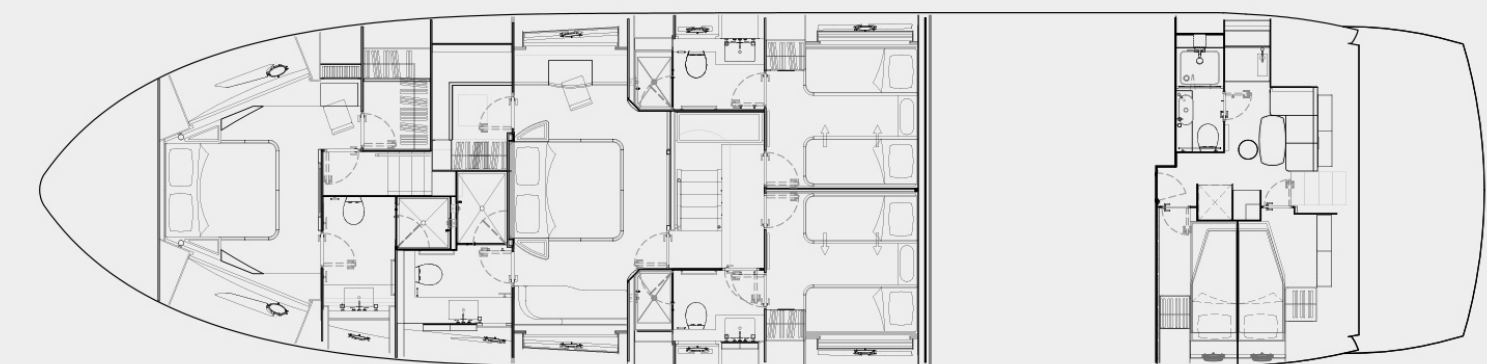
THE LAST NAME IN YACHTING



FLYBRIDGE



MAIN DECK



LOWER DECK

SUNSEEKER  
PROVIDENCE



# PROVIDENCE



**BRISTOW**  
**HOLMES**

[harry@bristow-holmes.com](mailto:harry@bristow-holmes.com)

Tel. +44 7881 29 74 75

[www.bristow-holmes.com](http://www.bristow-holmes.com)

London - Dubai - Miami - Monaco - Palma - Singapore - Sydney