

SUNSEEKER
ZULU

MAX SPEED
25 KNOTS

CABINS
5

YEAR
2013

LOCATION
SOUTH OF
FRANCE

LENGTH
34.53M



INTRODUCTION

'ZULU' is a fabulous example of the Sunseeker 115 Sport Yacht and available exclusively through Bristow-Holmes. She is the newest available 115 Sport Yacht for sale in Europe and without doubt the most tastefully finished interior owing to her refit in 2017. Boasting an extensive specification, built for an experienced owner she features 11 berths in 5 cabins. Never chartered and always used privately this is an opportunity not to be missed.

'ZULU' is without doubt one of the most striking Sunseeker 115 Sport Yacht's ever to leave the well renowned British Shipyard. Built in 2013 she benefits from a number of modifications to her standard specification over earlier models. Following an interior refit in 2017 'ZULU' is unlike any other 115 Sport Yacht on the market. 'ZULU'S Interior woodwork & cabinetry is a combination of Satin Finish Black American Walnut and Wenge complemented with custom tables in Maccassar Ebony, and glass and stainless steel accents. Neutral colour and varied high quality fabrics enhance the décor.

The saloon has been modified to provide a much more homely and comfortable feeling, with folding balconies and sliding glass doors to both Port and Starboard she really opens up, allowing maximum light and air into the space. She accommodates up to 10 guests in 5 En-Suite Cabins.

The Owners Suite on the Main Deck benefits from the trade mark 'up and over bulwarks' thus gaining maximum space and privacy. Below decks a further 8 guests can be accommodated in 4 En-Suite Cabins. Two VIP Cabins Aft, a Double Cabin to Port and a spacious Twin Cabin to Starboard.

Crew accommodations are forward on the lower deck with independent crew access. Two Twin Crew cabins and a separate Captain's cabin. All cabins have en-suite heads, and a Day head is located in the Foyer area main deck

SUNSEEKER
ZULU





SPECIFICATION

Name	ZULU
Price	€5,650,000 Ex Vat
Builder	Sunseeker
Model	115 Sport Yacht
Length	34.53 Metres
Year	2013
Location	South of France
Guests	11
Guest Accomodation	1 Master - 2 VIP - 1 Double - 1 Twin with Pullman
Crew	5
Crew Accomodation	1 x Captains Cabin, 2 x Twin Crew
Exterior Designer	Sunseeker
Beam	7.39 Metres
Draft	2.38 Metres
Hull	GRP
Classification	RINA Pleasure
Engines	2 x MTU V16 2000 M94
Max Speed	25 Knots

TENDERS

Novurania 540 Stern Drive Tender
Tender Re-fueling system fitted in the garage to allow filling of tender from the ships diesel tanks



SUNSEEKER
ZULU

COLOURS

Hull - Navy Blue
Hull Band - N/A
Boot Top - N/A
Superstructure - White
Cabinetry - Satin Black American Walnut and Wenge
Interior Upholstery - Neutral color with varied high quality fabrics



ZULU

The flybridge boasts a striking Jacuzzi and Sunbathing arrangement as well as dining area for up to 14 guests on the port side and highly popular bar on the starboard side. Built for enjoying life on the water the Sunseeker 115 Predator is one of Sunseeker's most popular models.

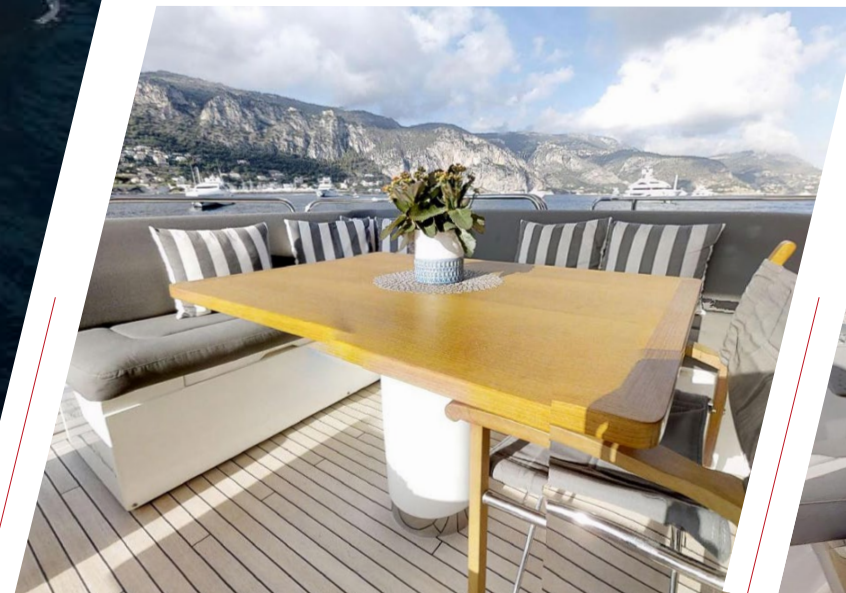
Symmetrical stairs from the aft deck down to the large swim platform provide easy access to the sea and the tender garage which houses a 5.4m tender, and 2 jet skis. The hydraulic swim platform submerges for easy launching of the tender and further toys.

All exterior upholstery has just been replaced along with a re-spray on the stern quarters of the hull, she presents impeccably, viewings are highly recommended.

No expenses have been spared in the maintenance of 'ZULU' with the recent completion of her RINA 5 Year Survey being a complete walk in the park.

Bristow-Holmes are delighted to offer 'ZULU' For Sale and we're confident she will sell quickly following her 1,000,000 Euro Price Reduction.





S A L O O N



M A S T E R C A B I N



ADDITIONAL OPTIONS



NAVIGATION UPGRADES

Central navigation display repeated to the flybridge helm with control

Dedicated GPS Antenna is able to be switched to the VHF's and the VHF dedicated GPS antenna is to be able to be switched to the GPS when required

Full control of radar, chartplotter and autopilot from the flybridge helm

Furuno Navtex unit fitted in the wheelhouse

Furuno RD33 fitted to allow wind data to be repeated in crew mess and captains cabin

Icom VHF with command mic in lieu of standard

Navigation Equipment Upgraded to 2 x 15" Hatteland monitors for the Flybridge console in lieu of standard

Navigation Equipment Upgraded to 3 x Hatteland 19" Monitors in the Wheelhouse console in lieu of standard

Radar Upgraded to Furuno 2117 X-Band 6ft Array in lieu of standard

Sailor 6110 GMDSS Sat C system fitted

Standalone Furuno AIS unit fitted in the wheelhouse

Transas - Radar integration option in lieu of standard

Ultrasonic wind system connected to Central Navigation Display



AV EQUIPMENT

AV system upgraded in the Saloon, Master Stateroom & Exterior Areas

10 x AIM 8 Five Speakers in the Flybridge with 2 x Subs

32" Sharp TV in Crew Mess

4 x AIM 8 Five Speakers in the Aft Cockpit with 1 x Sub

4 x AIM 8 Five Speakers in the Foredeck with 1 x Sub

AIM Speakercraft in all exterior areas with upgraded units

Airport Express in each deck connected to Bose V35 and Telephone System

All AV head units hidden from view

Apple iPod docks fitted in all Guest Cabins and Master Stateroom

Apple TV in all Guest Cabins, Master Stateroom and Saloon AV system

Blu Ray players in all Guest Cabins (Harmon Kardon), Master Stateroom and Saloon (Samsung BDC6900)

Bose Lifestyle V35 surround sound system with Samsung Blu-ray Player in Main Saloon

Bose Lifestyle V35 surround sound system with Samsung Blu-ray Player in Main Saloon

Bose Zone in each exterior area

ORCA control system fitted in all guest areas (saloon, master, guest cabins and all exterior zones). The system includes the supply of iPads for each area and zone

ORCA control system for all electric blinds and lights

System Zone for more than two sources

TV upgrade to Samsung 55" in Main Saloon

Upgraded sound system and speakers for the Master Stateroom comprising of - Rotel RSX-1562 with 1 x Bowers & Wilkins ASW 610XP Sub and 5 x Bowers & Wilkins CCM 683 Speakers

Upgraded sound system and speakers for the Saloon comprising of Rotel RSX-1562 with 1 x Bowers & Wilkins ASW 610XP Sub and 5 x Bowers & Wilkins CCM 683 Speakers



DECK EQUIPMENT

2 x Fixed Teak Tables on the Aft Deck
4 x Helm Seats on the Flybridge in lieu of standard single seat
4 x Mooring Bollards on the forepeak
Balconies on both Port and Starboard side of the Saloon
Custom Wood Flooring in the Saloon, Lobby and Dining Area
Dimmable Exterior Lighting
Electrically Operated Extendable Sun Canopy from the Hard Top to provide shade over Jacuzzi and Sunbathing Area
Extendable Teak Tables on the Fly Bridge with removable Centre Piece to create extra large fixed table for up to 14 guests if required
Fixed shower on the underside of the garage door with hot and cold feeds and local controls.
Flybridge GRP Hard Top with retractable centre canopy
Glass Fronted Jacuzzi and Fixed Sunbathing Area on the flybridge
Jacuzzi Heating Element upgraded from standard 1.5kw to 6kw model to increase production of hot water
Long Saloon Option increasing the saloon and living area by 6 Square Metres over the standard Layout
Polished Stainless Steel Anchors
Removable Stainless Steel Rain Shower on the swim platform
Side Mount Stairway for Side Boarding
Sliding Glass Patio Doors on Both the Port and Starboard side of the Saloon
Stern Docking Flood Lights with stainless steel bezels
Teak Side Decks and Flybridge
Underwater Lights - 100mm Large Xenon Fitted
Upgraded Icemakers throughout to Frigoboat Models in Lieu of Standard Raritan models
Upgraded Stainless Steel En-Sign Staff
Vimar lighting package installed in lieu of standard



ACCOMODATION DECK

- Black out blinds in all cabins
- Custom Headboards throughout
- Decolav Transparent Crystal Basins throughout
- Double Berth in Port Cabin
- Electrically operated blinds
- Internal Telephone Connection between all cabins
- Master Stateroom En-Suite has a central shower
- Pullman Berth in Starboard Twin Cabin
- Recessed central ceiling features in the Master Stateroom and all Guest
- Cabins with perimeter rope lighting



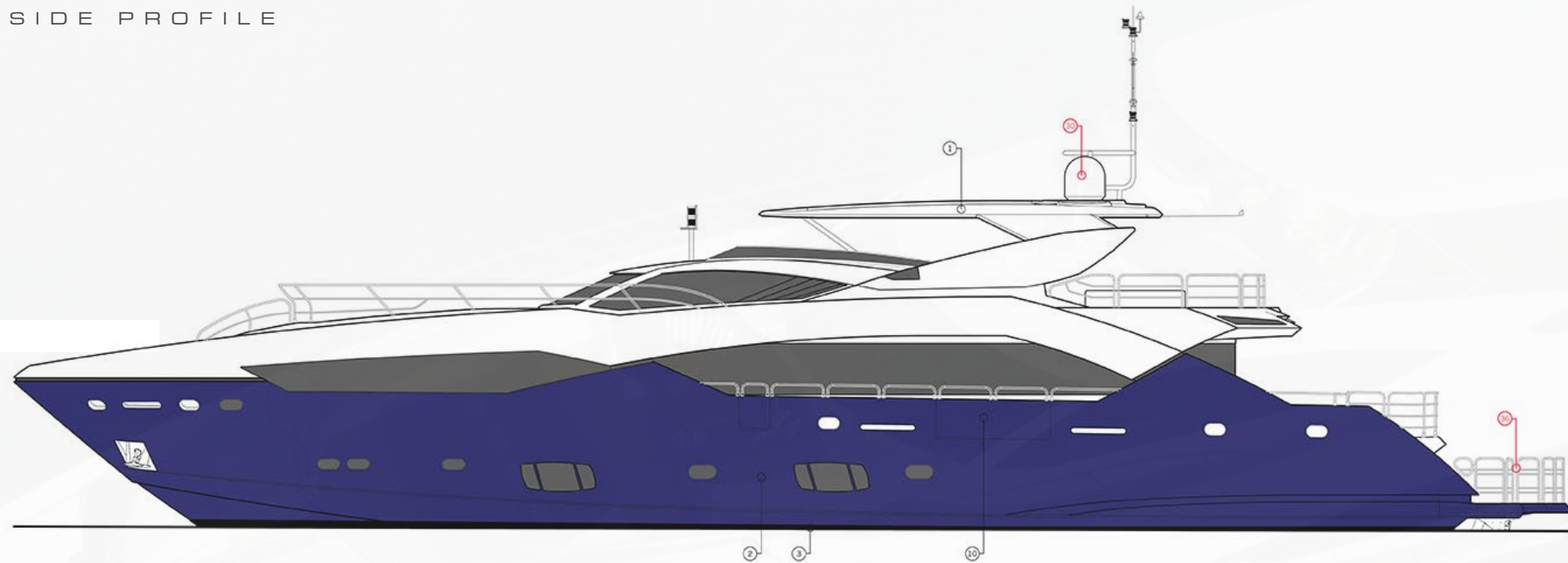


ENGINEERING UPGRADES

2 x Idromar MC3) Water Makers fitted in the port side stern laundry area with fresh water flush option
2 x Miele 600mm Wide Ovens in the Galley
2 x Sub Zero Freezer Drawers in Galley
2 x Sub Zero Wine Coolers in lieu of Standard single wine fridge
2nd Sea Water inlet and strainers fitted for air conditioning system with change-over valves
Additional back up water pumps for chillers (sea water and chilled water)
Additional Miele Professional washing machine and tumble dryer in the crew lobby
Air Conditioning Upgraded to quieter running AHDC units throughout
Air Conditioning Upgraded to Tropical Specifcation (unlike any other European Spec Boat)
Air Conditioning Upgraded to twin Air Handlers in Engine Room
Air Horn Upgraded to Twin Kahlenburg Option
Auto Troll Option for the Transimission (upgrade)
Built in Miele Coffee Machine in the Galley
Cockpit Electric BBQ grill in lieu of standard
Custom marine refrigeration (420 litre capacity) and freezer (330 litre capacity) unit in Galley with water cooled compressors in lieu of standard fridge/freezer
Dirty Oil Pump out connection fitted in the Garage
Electrically Operated Blinds
Fuel Cleaning Centrifuge System Fitted
Garage Upgraded to allow for 5.4 Metre Novurania Tender
Generators Upgraded to Two Kohler 65kW 60Hz in lieu of standard
Hyrdraulic Bow Thruster upgraded from 65hp to 100hp (500kg of thrust increased to 650kg of thrust)
Hyrdraulic Stern Thruster - 65hp (500kg of thrust)

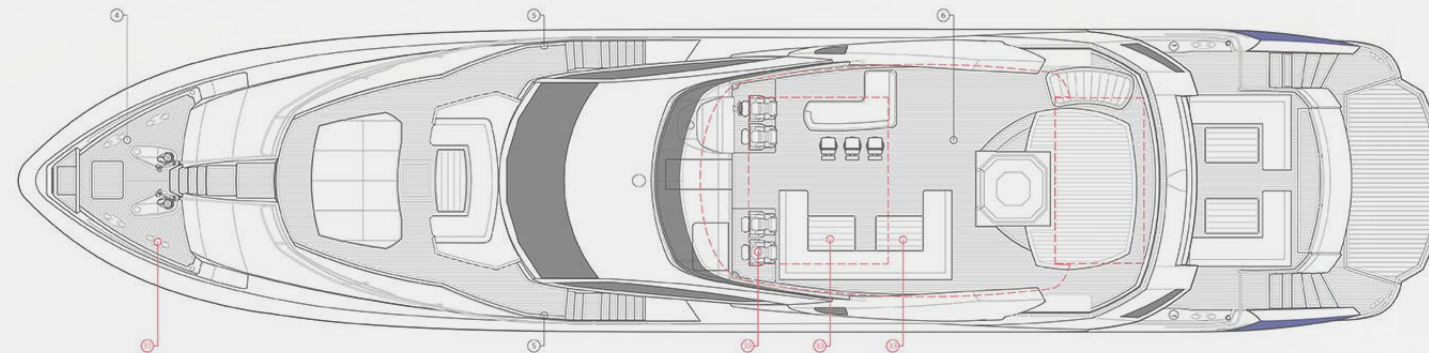
KVH HD7 Satellite TV System
Long Range Fuel Tank (additional 5,050 Litres)
MPA Monitoring - CCTV system with four static cameras and dedicated 15” MPA master display in crew mess connected to Tijssen system
MPA Monitoring - Circuit Breaker Status Monitoring System Upgrade with Additional system feature allowing Immediate Viewing of the state of all system breakers and warning alarms for all circuits via MPA Touch Screen.
MPA Monitoring - Complete Main Electrical System Distribution and Control Upgrade Includes facilities and features of Pleasure version but also includes MCA approved emergency power supply system, 2nd fully redundant pc control from the main helm and RINA type approved stand-alone fire system with MPA control, Bilge level monitoring and alarm system, Tank level monitoring and alarms for all fluid tanks with multiple user settable warning alarms
MPA Monitoring - Engine Room Fan Control System Upgrade Additional system feature allowing completely variable speed/direction control of all engine room fans control is via MPA Touch Screen.
MPA Monitoring - ModBus Generator Control and Monitoring System Upgrade Additional system feature allowing complete control and monitoring of generator parameters and alarms via MPA Touch Screen.
MPA Monitoring - Swipe card security alarm system - Integrated to MPA Miele Professional Washing machine, Tumble dryer & dishwasher in lieu of std
Passerelle Upgraded to Polished Stainless Steel
Port and Starboard Anchor Chain Upgraded from 120mm to 165mm chain
Portable air compressor unit with power outlets in Garage, Foredeck & Engine Room
Return Valve fitted in the day fuel tank so that it can be emptied for cleaning
Second Generator P.T.O for hydraulic system & Trac Star
Sewage Treatment Plant
Shorepower converter 75kVA in lieu of Isolation Transformer
Sub Zero Fridge Drawer in Galley
Trac Hydraulic Digital Fin Stabiliser system (providing full roll control at speeds above 13 knots along with with significant roll reduction whilst at rest and anchor)
Workbench and Vice Fitted in Engine Room

SIDE PROFILE

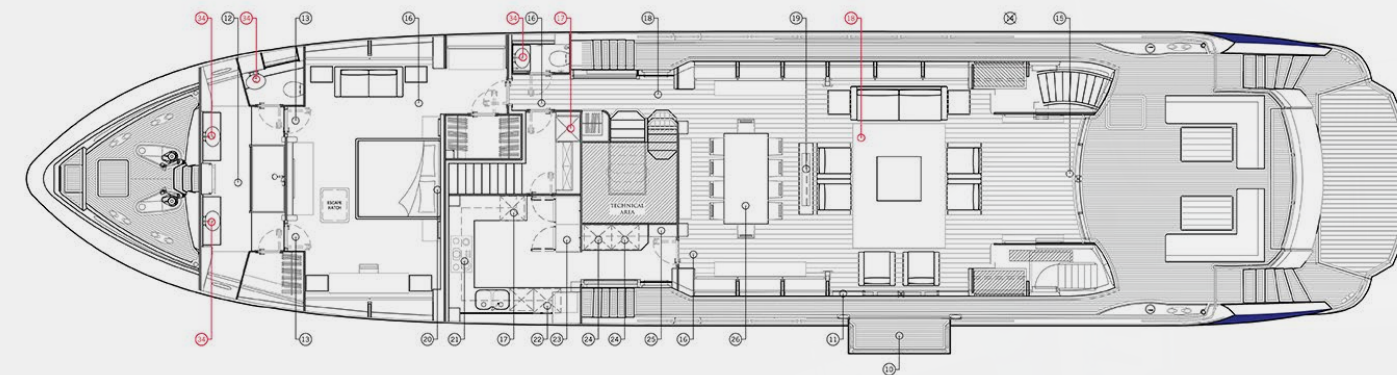


THE LAST NAME IN **YACHTING**

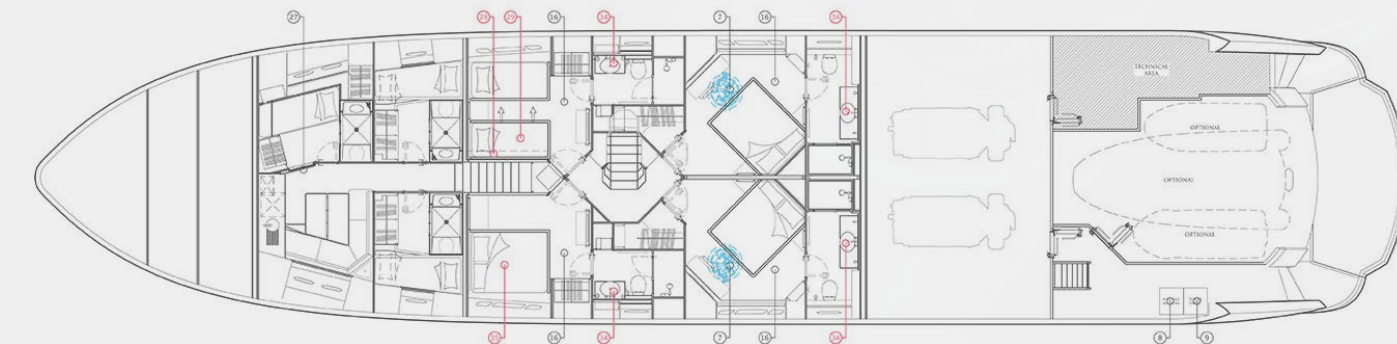
UPPER DECK



MAIN DECK



LOWER DECK



SUNSEEKER
ZULU

ZULU



BRISTOW
HOLMES

harry@bristow-holmes.com

Tel. +44 7881 29 74 75

www.bristow-holmes.com

London - Dubai - Miami - Monaco - Palma - Singapore - Sydney