

S U N S E E K E R
MIBOWT

MAX SPEED
25 KNOTS

CABINS
4

YEAR
2014

LOCATION
SOUTH OF
FRANCE

LENGTH
26M



SUNSEEKER **MIBOWT**

INTRODUCTION

Bristow-Holmes is proud to present the stunning Sunseeker 86 Yacht 'MiBowt'. Fitted with 2 x MTU 10 V 2000 M94's and priced to sell, she won't be on the market for long.

Built in 2014 for her highly experienced owner, the Sunseeker 86 Yacht has quickly become one of Sunseeker's most popular models.

The Sunseeker 86 Yacht is the smallest Yacht in the Sunseeker range to offer both a Hydraulic Bathing Platform and drop-down balcony off of the saloon. 'MiBowt' was designed in true Sunseeker fashion. 'MiBowt' features, Black American Walnut cabinetry in Gloss Finish throughout complimented with cream upholstery, hardwood flooring and light-coloured carpets.

'MiBowt' boasts a number of upgrades over the standard specification. From Fin Stabilizers to Twin Generators, Carbon Fibre Hard Top to the Extended Flybridge Sun pad. Her striking white hull compliments the extensive panoramic glass windows perfectly.





SPECIFICATION

Builder	Sunseeker
Model	86 Yacht
Location	Mediterranean
Engines	2 x MTU 10V 2000 M94
Year	2014
Exterior Designer	Sunseeker
Length	26 Metres / 86'
Beam	6.47 Metres / 21'
Draft	1.95 Metres / 6' 5"
Year Launched	2014
Guests	8
Cabins	4
Cabin Configuration	1 Master - 1 VIP - 2 Twins
Crew Accomodation	4
Crew Cabins	2 x Twin Crew Cabins
Hull	GRP
Max Speed	25 Knots
Cruising Speed	22 Knots

TENDERS

Williams TurboJet 445



SUNSEEKER
MIBOWT

COLOURS

Hull - White
Hull Band - White
Boot Top - Jet Black
Superstructure - White
Hardtop - Carbon Black
Coach Roof - Satin Black
Cabinetry - Gloss Black American Walnut
Interior Upholstery - Cream/White



MIBOWT

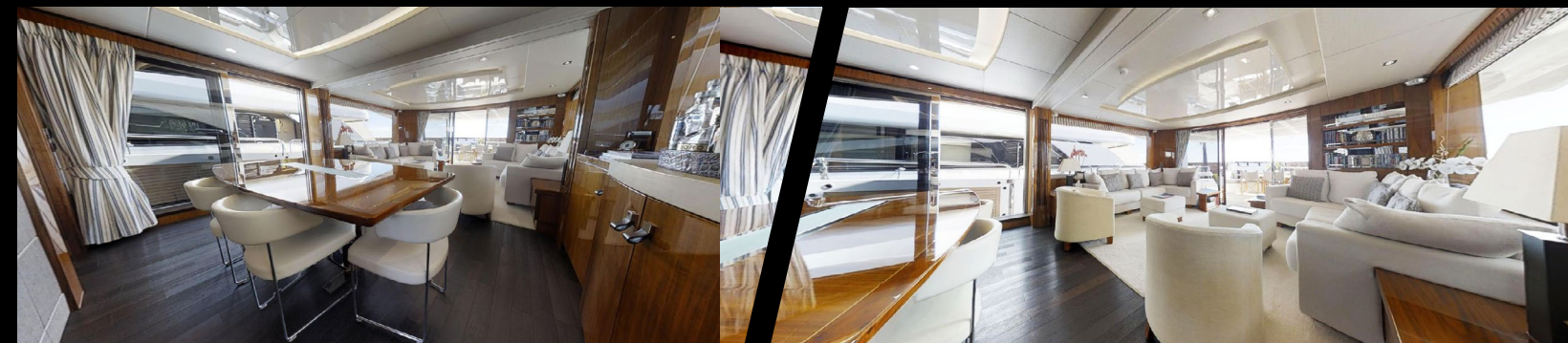
This Sunseeker 86 Yacht features 4 x En-Suite class leading Cabins. A full beam Master Suite located amidships, Forward VIP Cabin and 2 x Twin Aft Cabins (both with sliding beds that convert from singles to doubles with ease).

'MiBowt' was built with both inside and outside entertaining in mind. The large flybridge bar acts as the centrepiece for socialising whilst the drop down balcony is the perfect place for watching the world go by.





M A S T E R C A B I N



ADDITIONAL OPTIONS



NAVIGATION UPGRADES

3 x Hatteland 'System X' 19" Glass Bridge Displays (Two for Navigation and One for monitoring)

Simrad 6ft 10kW GS15 GPS Antenna

Simrad AIS NAIS 400 Class B AIS Transponder system with integrated GPS Receiver

Simrad Autopilot System with control from QS80 Joystick and IS40 Display

Simrad BSM-1 Sounder Module with B744V Speed and Depth Transducer

Simrad Go-Free Wireless access control for iPad

Simrad IS40 multifunction instruments x 2 (Displaying Navigation Information)

Simrad NS0 Processor with Simrad OP40 Controller

Simrad RS87 VHF with DSC

Simrad TX010S High Definition Digital Open Scanner Radar

AV EQUIPMENT

Aerial 2.4 Metre Whip for FM Radio to match VHF Aerial on Radar Arch

BOSE Audio Upgrade Package

KVH M9 Satellite Television System with M9 Dummy Dome on Opposite Side of Radar Arch

Pepwave HD2 3G Router



DECK EQUIPMENT

Chocks on Platform for Tender
Additional Spring Cleats located on the aft edge of the hull for stern mooring
Covers Package - Aft Cockpit Seating Cover, Aft Cockpit Table Cover, Aft Cockpit Sunbather Cover, Foredeck Seating Cover, Foredeck Sunpad Cover, Foredeck Table Cover, Flybridge Seating Cover, Flybridge Sunpad Cover, Flybridge Table Cover and Flybridge Helm Seat Covers
Electric BBQ Grill on Flybridge
Flybridge Cockpit Teak Decking
Flybridge Carbon Fibre Hard Top Including retractable centre canopy and aft extending sun canopy
Pair of Retractable Cleats for Tender on the Bathing Platform
Saloon Starboard Side Opening Sliding Door Option
Starboard Main Deck Saloon Bulwark Balcony Option
3 x Bar Stools for the Flybridge Wet Bar
Twin Anchor Arrangement at Bow with 2 x Upgraded Lewmar V8 Windlass instead of standard models. 1x 80kg Anchor with 100 Metres of Galvanised 12mm chain. 1 x 50kg Anchor with 60 Metres of 12mm Galvanised Chain
Two 8 Man Liferrafts stored in Stainless Steel Baskets on the aft of the Flybridge Deck
Underwater Lights (x 4 - Wide Angle) by Aqualuma on the Stern
Water Purifier for Icemaker



ENGINEERING UPGRADES

Air Conditioning Upgraded to Tropical Specification
Bow and Stern Thruster Upgraded to SP550HYP Models
CMC Electric Digital Fin Stabiliser System providing full roll control at speeds above 13 knots and significant roll reduction while at rest / anchor
Compass Swing and Adjustmet with correction card
Generators - One Kohler 28kw 50hz and on Kohler 33kw 50hz
Line Voltage Regulator - Allows the yacht to be connected to a larger range of shore supply voltages than would otherwise be possible.
Preparation For Future Installation of Watermaker if required
Separate Miele Washing Machine and Tumble Dryer in the Crew Cabin
Standby Fresh Water Pump - Fitted using a separate pick-up and strainer from the tank feeding separately into main water circuit
Stern Thruster - Sleiption SP300HYP
Work Bench at Front of the Engine Room

INTERIOR SPECIFICATION

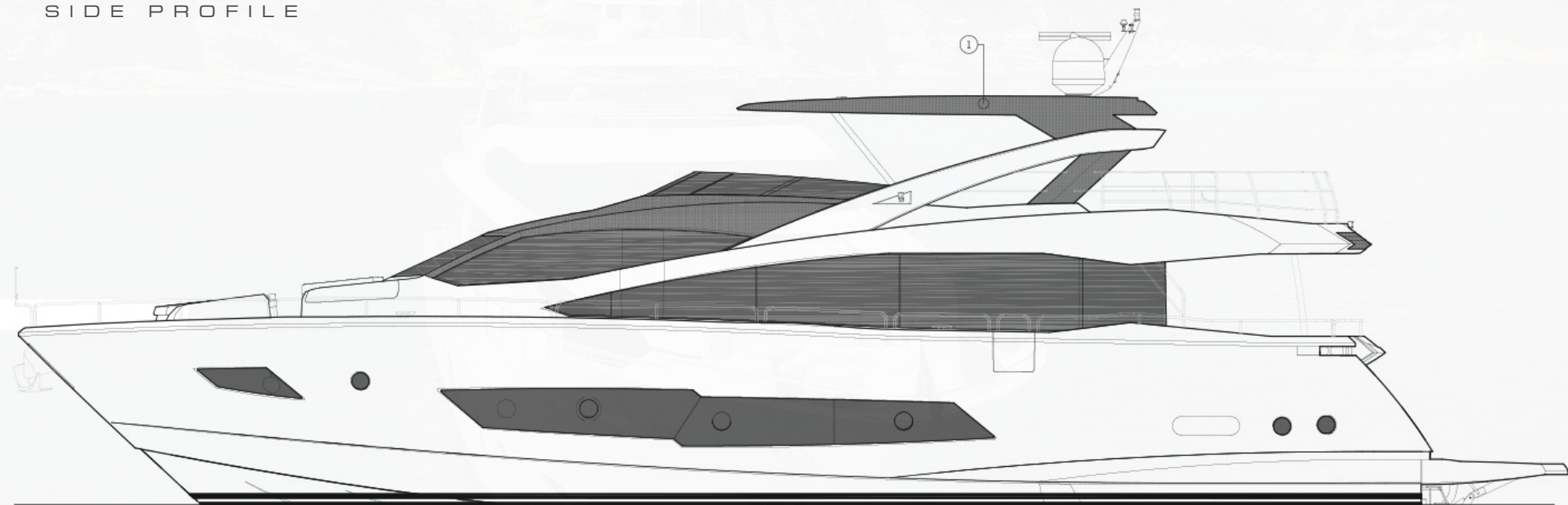
Dimmer Switches on Interior Overhead Lighting
Main Deck Day Head Option
Safe with Digital Lock in the Master Stateroom
Sliding Beds in Both Twin Guest Cabins (converting from Twin to Double Beds)
Wine Cooler Fitted in the Saloon

CREW MESS

Apple iPad/iPhone Airport Express Wireless connectivity linked to AV System in the Crew Cabin
Samsung 22inch TV in the Crew Cabin
Simrad RS90 Third Station Handest in the Crew Mess

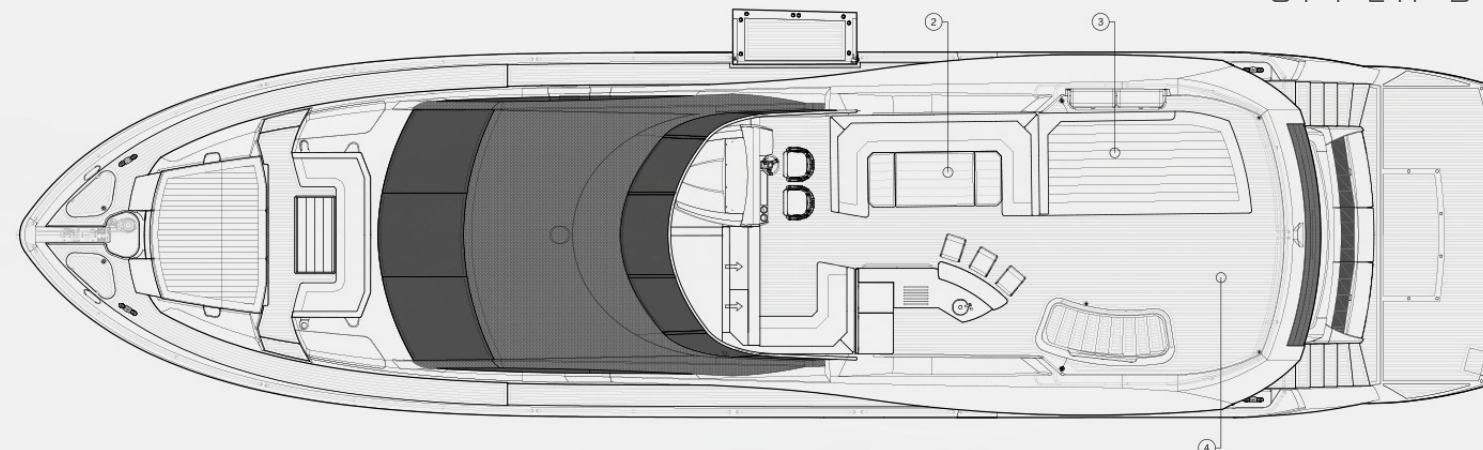


SIDE PROFILE

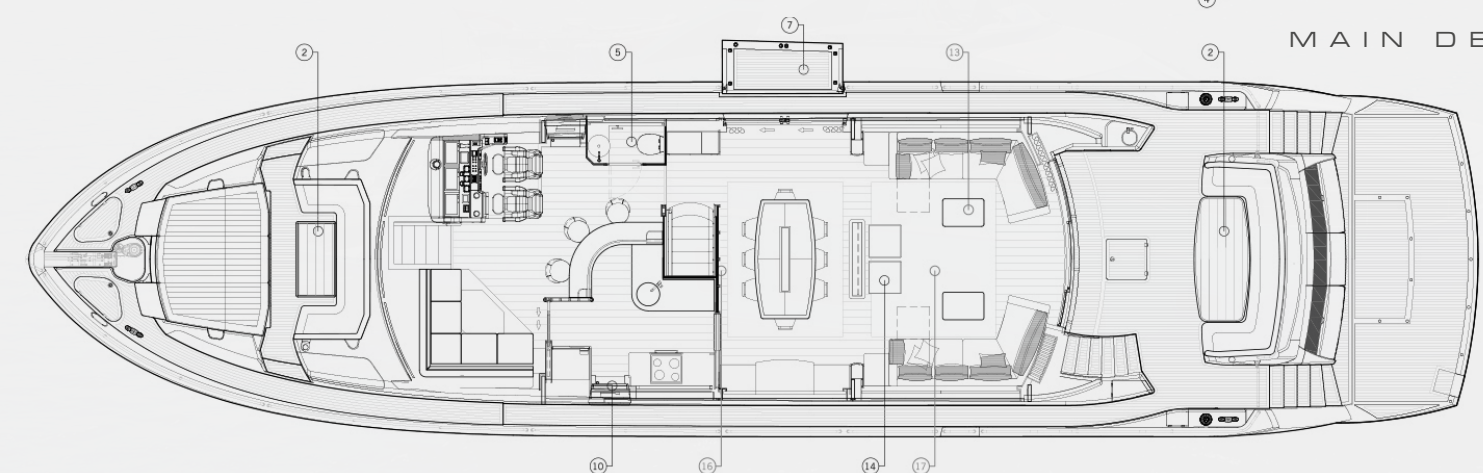


THE LAST NAME IN **YACHTING**

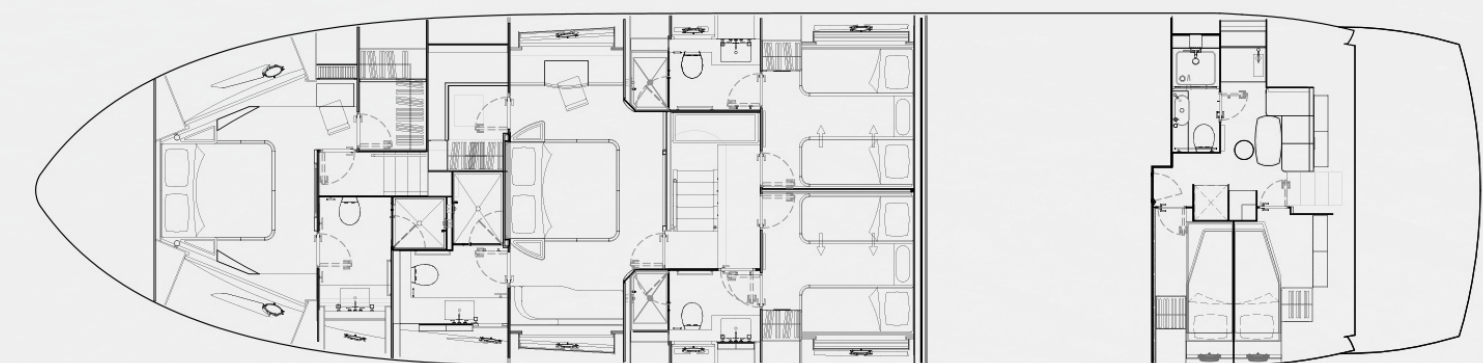
UPPER DECK



MAIN DECK



LOWER DECK



SUNSEEKER
MIBOWT

MIBOWT



BRISTOW
HOLMES

harry@bristow-holmes.com

Tel. +44 7881 29 74 75

www.bristow-holmes.com

London - Dubai - Miami - Monaco - Palma - Singapore - Sydney