

S U N S E E K E R  
**TUPPENCE**

MAX SPEED  
29 KNOTS

CABINS  
5

YEAR  
2011

LOCATION  
FRANCE

LENGTH  
30 M



# SUNSEEKER TUPPENCE

## INTRODUCTION

The Sunseeker 30 Metre Yacht 'TUPPENCE' is quite frankly one of our most exciting brokerage opportunities. Very rarely do Sunseeker 30 Metre Yacht's come up on the Brokerage Market and never before have we come across a 30 Metre Yacht in such stunning condition. From the moment we stepped on-board we knew this was an opportunity not to be missed and one that would make one potential purchaser extremely happy.

'TUPPENCE' has been professionally maintained by her full time crew since delivery and this really shows. With the same owner from new this is an opportunity not to be missed. Her Gloss black American walnut cabinetry is in stunning condition owing to her owner's meticulous attention to detail.

The open saloon boats a seamless transition between the dining area and saloon seating further enhancing the open plan feel to this particular vessel. Moving forward we find the Master Cabin located on the split level main deck, forward of the main deck lobby entrance and day head.

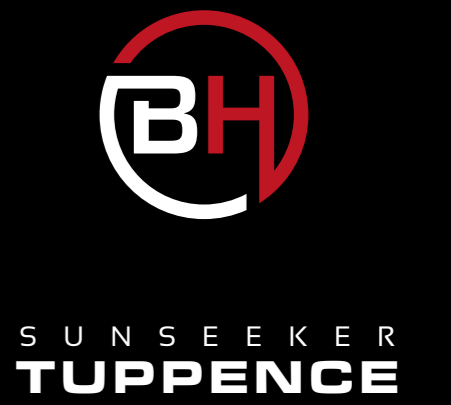
The Master Cabin on 'TUPPENCE' is truly unique, with a large private owners office/saloon the spacious feel of this particular suite hits you the moment you step through the door. Featuring a mezzanine style split level design.





**SPECIFICATION**

Name	TUPPENCE
Price	€3,495,000 VAT PAID
Builder	Sunseeker
Model	30 Metre Yacht
Length	30 Metres
Year	2011
Location	South of France
Guests	12
Guest Accomodation	1 Master - 2 Double - 2 Twin's with Pullman
Crew	5
Crew Accomodation	1 x Captains Cabin, 2 x Twin Crew
Exterior Designer	Sunseeker
Beam	6.9 Metres
Draft	2.09 Metres
Hull	GRP
Classification	RINA Commercial
Engines	2 x MTU 16V 2000 M94
Max Speed	29 Knots



**COLOURS**

Hull - White
Hull Band - White
Boot Top - Black
Superstructure - White
Cabinetry - Gloss Black American Walnut and Wenge
Interior Upholstery - Neutral color with varied high quality fabrics



## TUPPENCE

'TUPPENCE' boasts a large galley that allows the Yacht to operate with a full-time chef if required. Fitted with only the highest-level equipment. This is a galley that Gordon Ramsey would be proud of.

Access to the Lower Deck is via a wide and comfortable staircase to the lower deck lobby. The Sunseeker 30 Metre Yacht was offered as a 4 or 5 cabin option. This 5-cabin option boasts the benefit of a two VIP Cabins and two TWIN Cabins with expansive glass hull windows and all with spacious en-suites. The clever layout of the cabins ensures each and every guest feels special whilst onboard. The Twin Cabins both feature pullman bunks to increase capacity to 12 guests if required. To fully understand and appreciate the layout we recommend you use our 360° Virtual Tour.

The flybridge on 'TUPPENCE' boasts two electric opening forward and aft facing canopies allowing the flybridge to bath fully in sunlight or hide out in the shade if required. There is flexible sunbathing area aft that can accommodate up to 8 guests comfortably as well as a two capacious dining areas to both Port and Starboard.

'TUPPENCE' is one of the highest specified Sunseeker 30 Metre Yachts, never before has there been such a well maintained, lightly used and one owner Sunseeker 30 Metre Yacht offered For Sale. An opportunity not to be missed and one that we are sure will not be on the market for long.





M A S T E R C A B I N



## ADDITIONAL OPTIONS



## NAVIGATION UPGRADES

- Raymarine nightvision camera connected to navigation system (see navigation specification at end)
- CCTV system with 4 cameras (engine room x 2 infra red, aft cockpit x 2 - one for stern docking and the other for general surveillance) connected to Navigation displays in Wheelhouse and Flybridge Helm plus Crew Mess TV
- 4kW Pedestal - Super HD Digital
- 72" Open Array - Super HD Digital
- G Series Command Center Keyboard (Wired)
- G150 15" Ultra Bright Marine Display
- GB170 17" Glass Bridge Monitor
- GPM400 - G-Series Processor Module - EU
- GVM400 Audio Video Module
- Ray240E 2nd Station
- Ray240E VHF Radio
- Raystar 125+ GPS Antenna
- SeaTalk HS Network Switch
- SPX10 Course Computer
- ST70 3.5" Multifunction Instrument Display (2 x Fly Helm 1 x Crew M)
- ST70 Autopilot Control Unit
- ST70 Depth Transducer Pod
- ST70 Speed Transducer Pod
- ST70+ 6.5" Multifunction Instrument Display
- ST70+ Instrument Keypad



## AUDIO EQUIPMENT

All exterior Bose amps upgraded to SA3 model to allow exterior waterproof jack socket connection for each area (foredeck, aft cockpit and flybridge) connected to I-Pod headphone socket

GRP unit on mid port side with 42" exterior TV on rise/fall/rotate on the Flybridge Deck

"GSM black box (voice/fax/data) connected to 3G router and onboard Wi Fi network, plus PABX telephone exchange GSM black box (voice/fax/data) connected to 3G router and onboard Wi Fi network, plus PABX telephone exchange with B&O cordless phones in Saloon, Master & Wheelhouse, B&O fixed phones in Galley, Crew Mess and 4 x Guest cabins, Master programming phone in Wheelhouse"

KVH M9 satellite TV system with 8 x Sky+ HD decoders for all TV's. Dummy KVH M9 dome on opposite side of radar arch. Each guest cabin has it's own decoder, plus Saloon and Crew Mess. Exterior TV's share one decoder

TV in Saloon (Samsung 55" 3D LED) with electric rise and fall screen (walnut framed bevelled edge mirror) conceals when not in use

### Flybridge

3 x Pairs of marine speakers (Zoned from Saloon AV system)

1 x Bose PMC II remote control for speakers

3 x SA3 amplifiers for speakers

I-Pod Jack connection socket from SA3 amplifier to waterproof outlet

Exterior TV 42" on rise/fall rotate

Sky+ HD satellite decoder for exterior TV (one decoder shared between two exterior tvs)

Fusion DVD Player connected to exterior TV

### Foredeck

1 x pair of Alpine M700 marine speakers (Zoned from Saloon AV system)

1 x Bose PMC II remote control for speakers

1 x SA3 amplifier for speakers

I-Pod Jack connection socket from SA3 amplifier to waterproof outlet

### Aft Cockpit

2 x pairs of marine speakers (Zoned from Saloon AV system)

1 x Bose PMC II remote control for speakers

2 x SA3 amplifiers for speakers

I-Pod Jack connection socket from SA3 amplifier to waterproof outlet

Exterior TV 32"

Sky+ HD satellite decoder for exterior TV (one decoder shared between two exterior tvs)

Fusion DVD Player (MS-AV600G) connected to exterior TV

### Main Saloon Area

Samsung 55" 3D LED TV recessed in forward bulkhead behind electric rise/fall screen

Bose 48 surround-sound system with DVD/CD/Radio with 5 x surround speakers + sub-woofer speaker

5 x surround speakers + sub-woofer speaker

Apple I-Pod dock with Apple composite lead with audio & video capability

Samsung Blu Ray 3D player BDC6900

Sony Playstation 3 connected to AV system

Sky+ HD satellite decoder

### Main Deck Stateroom

Samsung 40" 3D LED TV on swivel mechanism

Bose 38 surround-sound system with DVD/CD/Radio with 5 x surround speakers + sub-woofer speaker

Bose link from the 38 to Bose Homewide system, acoustimass unit with two speakers and sub woofer

Bose PMCI remote

Apple I-Pod dock with Apple composite lead with audio & video capability

Samsung Blu Ray 3D player

Sky+ HD satellite decoder

Zone from Stateroom Bose unit to Zone in En Suite with two speakers and PMCI remote

### Lower Deck Aft Starboard Stateroom

32" Samsung LED on rise and fall

Bose 321 surround-sound system with DVD/CD/Radio

Apple I-Pod dock (P/N501233) with Apple composite lead (P/N499782) for audio & video capability

Sky+ HD satellite decoder

### Lower Deck Aft Port Stateroom

32" Samsung LED on rise and fall

Bose 321 surround-sound system with DVD/CD/Radio

Apple I-Pod dock with Apple composite lead for audio & video capability

Sky+ HD satellite decoder

### Lower Deck Forward Port Guest Cabin

22" LG TV

Bose 321 CD/DVD player with two speakers and sub-woofer speaker

Apple I-Pod dock with Apple composite lead for audio & video capability

Customer supply Sky+ HD satellite decoder

Sony Playstation 3 connected to AV system

### Lower Deck Forward Starboard Guest Cabin

22" LG TV

Bose 321 CD/DVD player with two speakers and sub-woofer speaker

Apple I-Pod dock with Apple composite lead for audio & video capability

Sky+ HD satellite decoder

Sony Playstation 3 connected to AV system

### Crew Mess

19" Samsung LED flat screen television

CD/DVD player with two speakers

Apple I-Pod dock with Apple composite lead for audio & video capability

Sky+ HD satellite decoder

CCTV feed to TV

Composite switcher required

### Crew Cabins- Forward Starboard, Forward Port, Aft Starboard

Simple jack head lead (for I-Pod connection) from each CD/Radio

Alpine CDA117 CD/Radio with two speakers in each cabin







## ACCOMODATION DECK

Additional Sound insulation fitted between crew quarters and Master Stateroom

Bank of wardrobes fitted to increase width of Stateroom entrance area,

Lower deck has 2 x Double Guest Cabins and 2 Twin Guest Cabin Option

Lower deck aft En Suite shower trays enlarged to full space approximate dimensions 1180mm x 925mm

Master and Aft Guest En Suite Shower cubicle bulkheads finished in Laminam Progetto Oxide Avorio in lieu of standard

Manual Oceanair blackout blinds in saloon/dining/lobby and all guest cabins

Revised Crew Quarters layout with third crew cabin (with two portlights) with single berth on forward port side. Opaque glass window on inboard bulkhead for natural light to crew mess area

Twin En Suite shower cubicle bulkheads in Laminam Metropolis Moro (dark colour) in lieu of standard

Aft Cockpit

## DECK

All Galley, Crew Mess & Wheelhouse sockets are only European 2-pin

Cleats - Stern mooring cleats fitted on the aft hull coamings

Carbon fibre and polished stainless steel ensign staff in lieu of standard

Custom wetbar located forward (running athwartships) with seat at forward starboard side in lieu of helmseats. Two Kenyon 'All Seasons' BBQ griddles, with 2 x Teppanyaki griddle plates (interchanged with BBQ griddle plates when required). Wetbar worktop finished in Kokoura Avonite, satin finish, raised glass shelf in clear glass low-iron with frosted underside

Deckwash fittings are hose type fittings with tap beside in lieu of standard

Discreet LED lighting fitted to Galley floor plinths

Flybridge bar stools x 4

Flybridge Cockpit Teak Decking

Flybridge GRP opening hardtop with Retractable canopy from aft face of hardtop

Flybridge high pressure water misting system installed on underside of hardtop

2 x Ice maker's in Flybridge wetbar

Garage forward bulkhead modified to provide two storage pockets for Seabobs

GRP unit on mid port side with 42" exterior TV on rise/fall/rotate (see AV specification for further details)

L-shaped GRP seating areas on port and starboard sides of Flybridge deck

Manual Oceanair blackout blinds in saloon/dining/lobby and all guest cabins

Overhead shower located on underside of garage door

Platform bathing ladder sockets on both outboard sides of platform

Removable table in socket at bow, immediately forward of bench seat

Security alarm system with sensors at all exterior access points with swipe type arming/disarming

Side Mount Stairway with hull fittings port and starboard

Small wash hand basin with tap on port side of Aft Cockpit

Tinted film to side windows and sliding doors

Two Penguin custom fridge drawer units for Flybridge wetbar



## ENGINEERING

Air Conditioning - Upgraded to Tropical specification

Air Conditioning air handlers upgraded to quieter running AHDC units

Air Horn upgraded to triple Kahlenburg

All double sockets consist of 1 x British 3-Pin and 1 x European 2-Pin

Black water tank increased to approximately 750 litres total capacity in the Moulding, in the Black Water System

Built-in Miele coffee machine CVA 3660 with optional drawer fitted in Galley

Compressor pipe feed from Engine Room through to garage (clearly labelled 'For Workshop Use Only')

Custom marine refrigeration (420 litre capacity) and freezer (330 litre capacity) unit in Galley with water cooled compressors in lieu of standard

Fuel - long range fuel tank (additional 4,500 litres)

Fuel polishing system in the Engine Room

Galley hob, extractor and oven are wider Miele models than standard

Generators upgraded to 2 x Onan 50kW at 50Hz in lieu of standard

Hand-held remote engine control and one connection point (with engine throttles and thruster control, without stop & start keys)

Hydraulics - Stern thruster - Hydraulic (65hp)

Hydraulics - Trac Star Digital fin stabiliser system (providing full roll control at speeds above 13 knots and significant roll reduction while at rest or anchor)

KVH V7 wiring preparation package to be fitted for possible future installation of V7 system

Miele Professional Washing machine, Tumble dryer & dishwasher in lieu of std.

Miele Washer/Dryer fitted in Engine Room compartment in the Engine Room

Passerelle Upgrade - Polished stainless steel finish in lieu of white powdercoated

Portable air compressor unit with AC outlets in waterproof enclosures in Garage, Foredeck & Engine Room

Safe - 4 brick - with Digital lock in Engine Room

Second Generator P.T.O for hydraulic system & Trac Star

Shorepower converter 75kVA in lieu of Isolation Transformer

Spare air conditioning raw water and circulating pumps plumbed in with changeover valves

Stern Docking Flood Lights with stainless steel bezels

Storage cage fitted above each engine

Underwater lights - Aqualuma Series 6 white LED wide angle 5 across stern and 8 along each side - total of 21 underwater lights

Water softener for fresh water system fitted in the Engine Room

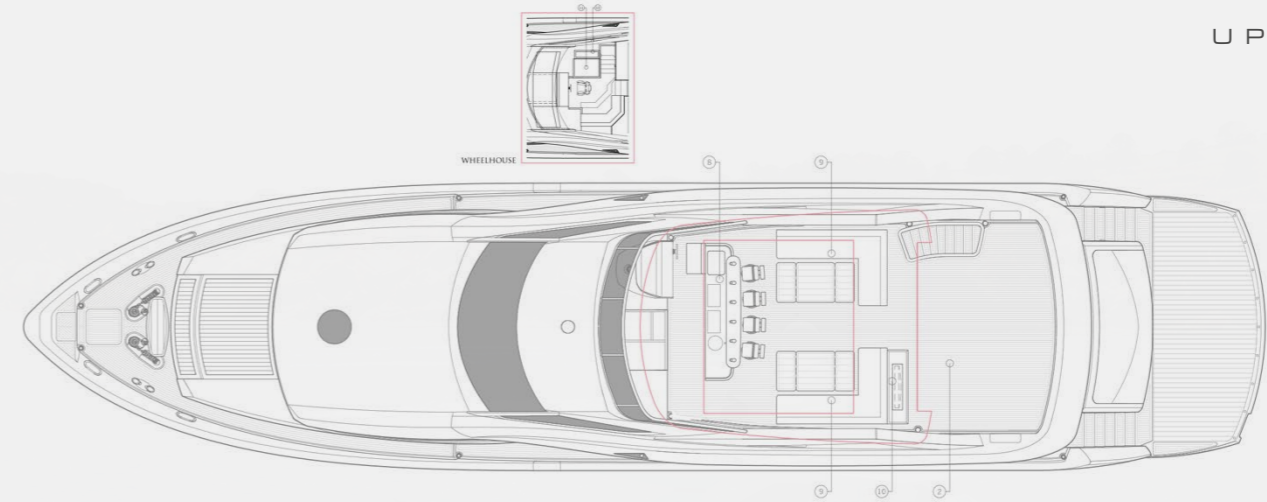
SIDE PROFILE



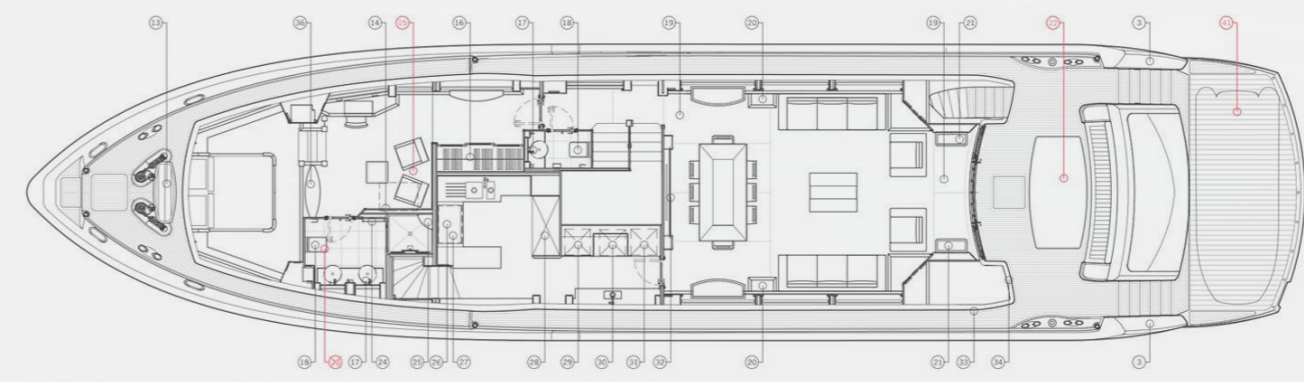
PROFILE

THE LAST NAME IN YACHTING

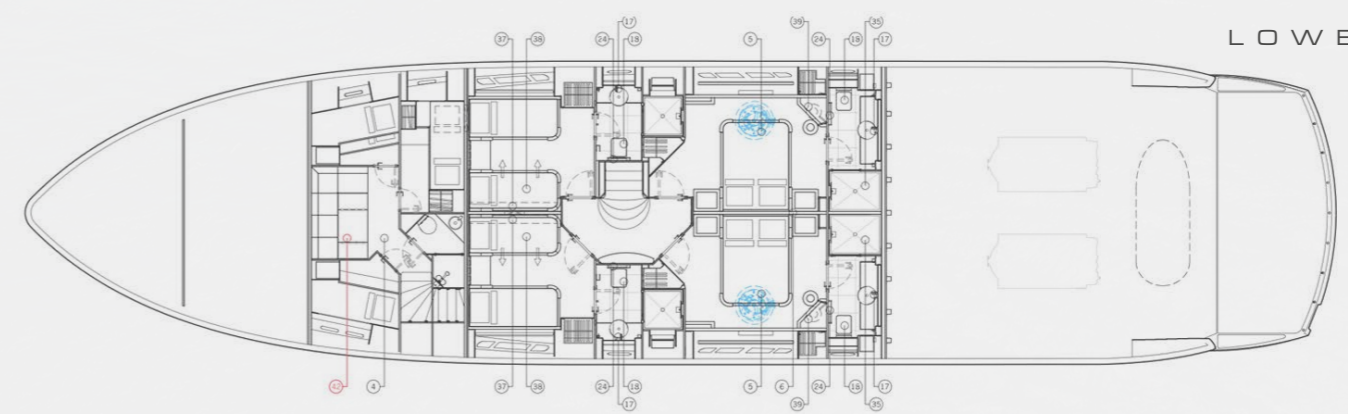
UPPER DECK



MAIN DECK



LOWER DECK



SUNSEEKER  
TUPPENCE

# TUPPENCE



**BRISTOW  
HOLMES**

[harry@bristow-holmes.com](mailto:harry@bristow-holmes.com)

Tel. +44 7881 29 74 75

[www.bristow-holmes.com](http://www.bristow-holmes.com)

London - Dubai - Miami - Monaco - Palma - Singapore - Sydney