

P R I N C E S  
**GEE N TEE**

MAX SPEED  
36 KNOTS

CABINS  
3

YEAR  
2014

LOCATION  
SPAIN

LENGTH  
22.56M



# INTRODUCTION

Bristow-Holmes are delighted to offer the stunning Princess S72 'Gee N Tee' Exclusively for Sale.

Built and delivered in 2014 this example of the very popular S72 Motor Yacht from UK Builder Princess Motor Yachts is in truly impeccable condition.

Professionally maintained from new with no expense spared 'Gee n Tee' shows as well as she did the day she left the shipyard. Unlike the majority of Princess Motor Yachts 'Gee n Tee' features a fully painted hull (rather than gel coat) owing to the owner's desire for a flawless finish. 'Gee n Tee' boasts an extensive list of additional options that include Hydraulic Fin Stabilisers, Hydraulic Bathing Platform, Opening Hard Top and Hydraulic Bow and Stern Thrusters to name just a few!

P R I N C E S  
**GEE N TEE**





SPECIFICATION

Builder	Princess
Model	S72
Location	Palma, Mallorca
Engines	2 x Caterpillar C32 Acert 1723hp V12
Year	2014
Exterior Designer	Princess
Length	22.56 Metres / 74ft 0"
Beam	5.38 Metres / 17ft 6"
Draft	1.47 Metres / 4ft 8"
Year Built	2014
Year Launched	2014
Guests	6
Cabins	3
Cabin Configuration	1 Master - 1 VIP - 1 Twin
Crew Accomodation	2
Crew Cabins	1 x Twin Cabin
Hull	GRP
Classification	Pleasure
Max Speed	36 Knots
Cruising Speed	24 Knots



PRINCESS  
GEE N TEE

COLOURS

- Hull - Midnight Blue
- Hull Band - Midnight Blue
- Boot Top - Midnight Blue
- Superstructure - White
- Cabinetry - Satin Walnut
- Interior Carpets - Natural Weave Square Grey



## GEE N TEE

'Gee n Tee' can accommodate up to 6 Guests in 3 Cabins. The Full Beam Master Cabin boasts 'best in class' panoramic windows and an extremely spacious En-Suite. The Forward VIP and Starboard Twin Cabin both sleep 2 respectively.

Lying in Palma Mallorca this is a unique opportunity to own an extremely well-maintained vessel that delivers on all accounts.



# M A S T E R C A B I N





## NAVIGATION UPGRADES

48" 12kw SHD open array radar scanner  
European Version Plotter Charts  
International VHF  
Raymarine Navigation equipment Raymarine e165 (15.4") multifunction displays (2) at lower console  
Two Raymarine e165 (15.4") multifunction displays at Sportsbridge console

## ENGINEERING UPGRADES

Hydraulic Bow thruster with proportional speed control  
Hydraulic Stern thruster with proportional speed  
Hydraulic system consisting of separate engine driven hydraulic pumps on each engine with cross connections allowing any system to be supplied with hydraulic power from either engine  
ONAN 27.5Kw Generator in place of standard  
Separate washing machine & dryer  
Trac Star 6X fin stabilisation system

## INTERIOR SPECIFICATION

Continental 220v/240v Sockets  
Starboard cabin has electric powered double berth conversion  
Satellite TV Systems



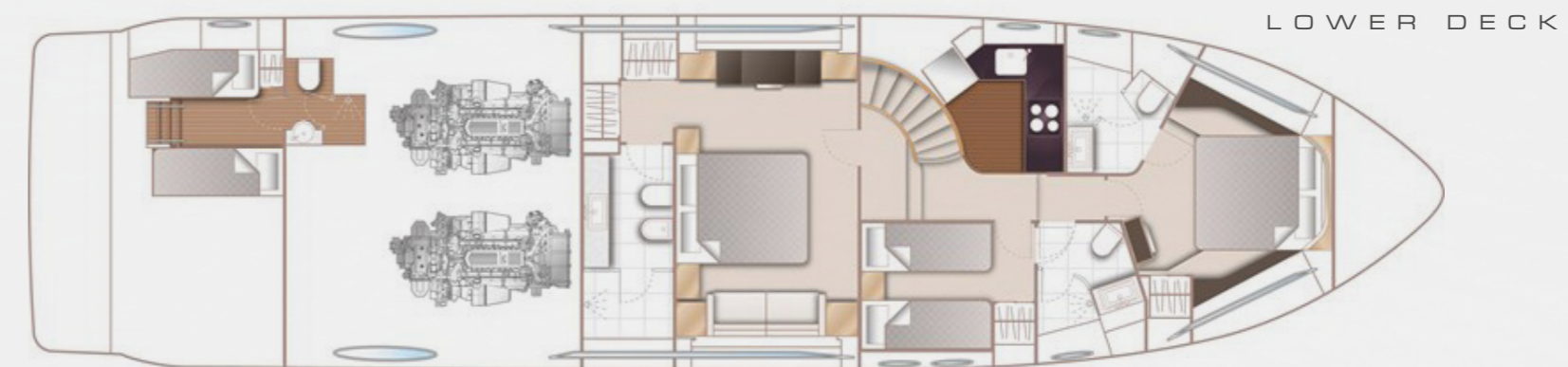
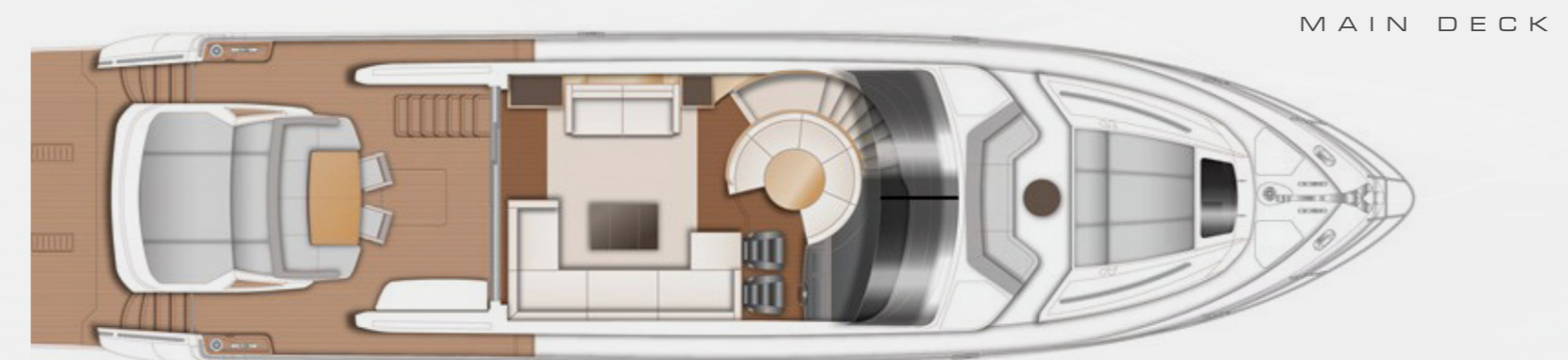
## DECK EQUIPMENT

Bimini Top - Electro-Hydraulicly Powered  
Bimini Top - in two tone Sunbrella with linen underside and LED lighting  
Cockpit, foredeck & sportbridge seating including helm seats & sunbed cushions in Movida Diamante Snow with contrast detail in Movida Met Carbon  
Electrically operated sliding roof over forward saloon area  
Electrically operated sun awning (White canvas) to aft end of cockpit  
Foredeck seating sun shade  
Hydraulic windlass  
Mosquito screens for all opening portlights  
Teak laid side decks  
Third station controls in cockpit  
Underwater transom lights





THE LAST NAME IN YACHTING



PRINCES  
GEE N TEE

# GEE N TEE



**BRISTOW**  
**HOLMES**

[harry@bristow-holmes.com](mailto:harry@bristow-holmes.com)

Tel. +44 7881 29 74 75

[www.bristow-holmes.com](http://www.bristow-holmes.com)

London - Dubai - Miami - Monaco - Palma - Singapore - Sydney