

SUNSEEKER  
**ALADDIN**

MAX SPEED  
25 KNOTS

CABINS  
5

YEAR  
2017

LOCATION  
MONACO

LENGTH  
40.5M





# INTRODUCTION

Bristow-Holmes are delighted to have been appointed worldwide Central Agent for the stunning Sunseeker 131 Yacht 'ALADDIN'

Built in 2017 for a highly experienced owner 'ALADDIN' is the most lightly used Sunseeker 131 Yacht to ever hit the brokerage market.

With less than 600 hours and only ever used privately this is an opportunity to purchase one of Sunseeker's most desirable models.

The tri-deck Sunseeker 131 Yacht epitomizes everything that is Sunseeker. Accommodating up to twelve guests in sublime surroundings, the sheer scale and layout of this immense yacht is awe-inspiring.

Expertly finished using ultra-modern materials and techniques, the 131 Yacht is one of the finest examples of modern-day superyacht building. The main deck features a lounge, separate dining area and full galley, while on the upper deck you'll find the sumptuous sky lounge, bridge and captain's cabin, servery, second day head and access to the Skydeck, where comfort and lavishness reach new levels. As impressive out in open water as it is in the harbour, this icon of design is unlike any other.



SUNSEEKER  
**ALADDIN**





SPECIFICATION

Price	€13,500,000 Ex Vat
Builder	Sunseeker
Model	131 Yacht
Length	40.05m / 131' 5"
Year	2017
Location	France
Guests	12
Guest Accomodation	1 Master - 2 VIP - 2 Convertible Twins (12 Guests)
Crew	8
Crew Accomodation	3 x Twin Crew Cabins
Exterior Designer	Sunseeker
Beam	8.09m / 26' 7"
Draft	2.70m / 8' 10"
Hull	GRP
Classification	RINA Commercial
Engines	2 x MTU 12V 4000 M93
Max Speed	25 Knots
Cruising Speed	20 Knots
Fuel Capacity	26,700 Litres
Fresh Water Capacity	4,950 Litred



SUNSEEKER  
ALADDIN

COLOURS

- Hull - White
- Hull Band - White
- Boot Top - Grey
- Superstructure - White
- Cabinetry - Gloss American Walnut
- Roof Linings - Shimmer Polar White
- Interior Upholstery - Ice
- Exterior Upholstery - Shingle
- Flooring - Satin Walnut 140mm Wide Plank Timber and Carpet





## ALADDIN

'ALADDIN' has been specified with 5 En-Suite Cabins. A Main Deck Master Cabin and 4 guest cabins on the lower deck. The lower deck configuration consists of two VIP Cabins and Two Convertible Twin Cabins with an additional pullman berth in each twin cabin. The Twin Cabin beds slide together to make double berths if required. Therefore, turning the vessel into a 5 Double Cabin layout if required.

'ALADDIN' features a raft of upgrades over the standard specification, from the moment you step onboard you will notice the custom 'grey caulking' in the deck instead of the traditional 'black caulking' this immediately gives the vessel a more modern and comfortable feel. The Main saloon features floor to ceiling glass on both the port and starboard side and this is replicated once again in the Master Cabin and the Sky Lounge.

Every aspect of 'ALADDIN' has been carefully considered; 'ALADDIN' presents better than a brand-new vessel as she has only been used for day trips by her current owners. This is a truly unique opportunity to acquire a stunning vessel in incredible condition.

Bristow-Holmes pride ourselves on listing quality vessels that are priced correctly and 'ALADDIN' is another stunning example. For more information on 'ALADDIN' and to arrange a viewing please do not hesitate to contact Harry Bristow-Holmes on the details below.









# M A S T E R C A B I N





ADDITIONAL OPTIONS



CLASSIFICATION UPGRADES OVER STANDARD SPECIFICATION

Built to RINA Rules for the Classification of Yachts Designed for Commercial Use 2013 and the MCA Large Yacht Code (LY3) with the following operational Class notation. PLEASURE VESSEL - RINA: C + HULL . MACH Y Unrestricted navigation EFP (Enhanced fire protection)

Certification - International tonnage certificate

Certification - Panama canal tonnage certificate

Certification - Suez canal tonnage certificate

Flag registered in Cayman Islands

INTERIOR UPGRADES OVER STANDARD SPECIFICATION

Electric - Main Deck Saloon Stern Sliding Patio Doors

Electric - Upper Deck Saloon stern sliding patio doors

Lower Deck Cabins - Electric Blackout Blinds

Main Deck Saloon full height glass on the port side

Main Deck Saloon full height glass on the starboard side

Master Stateroom - Dometic HiPro Mini-Bar

Master Stateroom - Dometic Safe MD 281C concealed in cabinetry

Master Stateroom - Powered Blinds for port and starboard windows

Medium Tinted film to side windows and sliding doors

Port Forward Stateroom - Pullman berth

Port Forward Stateroom - Sliding Berths to create Double or Twin Beds

Powered Blinds for the Main Deck Master Stateroom, the Port Aft Guest Stateroom, the Starboard Aft Guest

Stateroom, the Port Forward Guest Stateroom and the Starboard Forward Guest Stateroom

Second helmseat in Wheelhouse

Sprung mattress for all beds

Starboard Forward Stateroom - Pullman berth

Starboard Forward Stateroom - Sliding Berths to create Double or Twin Beds

Turnstyle Leather and polished Chrome door handles

Upper Deck Saloon - Icemaker Victrofrigo Classic

Upper Deck Saloon - Miele undercounter Refrigerator

Upper Deck Saloon - Wine Cooler

Vimar ByMe Lighting controllable also from Wheelhouse Bridge Touch Screen

Vimar ByMe Lighting controlled from internal Touch Screens

Upper Deck Saloon - Wine Cooler





# M A S T E R C A B I N

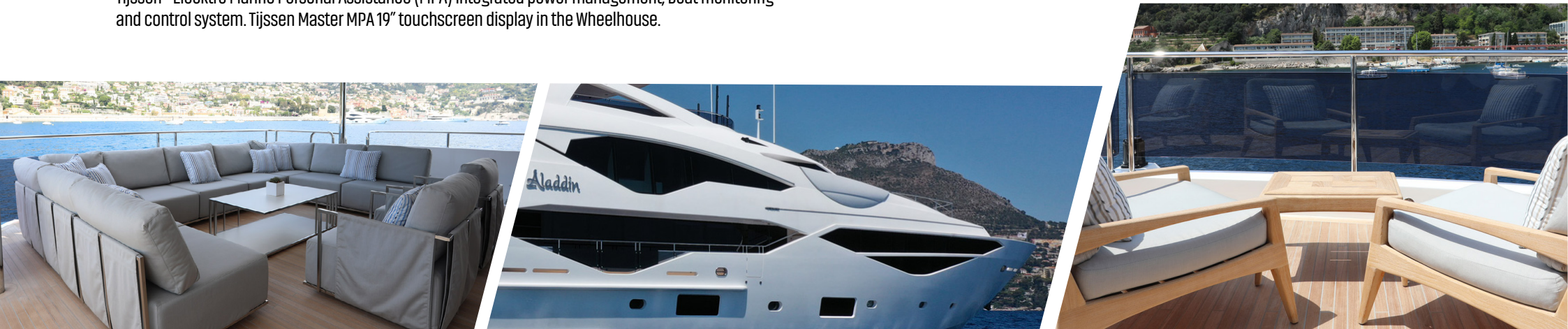




ELECTRICAL UPGRADES OVER STANDARD SPECIFICATION

Kahlenberg Chimetone D1 chrome twin trumpet fitted on forward brow
Navigation Halogen lights - Aquasignal series 55
Preparation for future fitment of V-Sat, including all associated wiring and power supplies
Professional Appliances - Second set of Miele Professional laundry Appliances. Miele Washing machine and Miele Tumble dryer
Professional Appliances. Miele Washing machine and Miele Tumble dryer
Shore power configuration is a single 125A plugged flexible 20M cable on an electric reeling system. Second Shore power configuration is a single 125A plugged loose flexible 20M cable via a fixed inlet. Connected to a shore power converter Atlas 90 kVA-SPA-II Series 50Hz. Input 180-530V single or three phase up to 90kVA. Output 230/400V 50Hz 3 phase 90kVA
Shore power converter Atlas 90 kVA-SPA-II Series 50Hz. Input 180-530V single or three phase up to 90kVA. Output 230/400V 50Hz 3 phase 90kVA
Sockets - Interior AC 220V 50Hz sockets - Euro 2 pin
Tijssen - Display of the main generator parameters.
Tijssen - Remote Access via internet VPN for Tijseen Elektro factory (captain approve access only) Fire Alarm Monitoring. Pop up alarm in the event of active fire alarm
Tijssen - AC Electrical system power monitoring and display.
Tijssen - CCTV camera system with eight dedicated cameras. Camera 1 Aft Cockpit viewing towards stern entry point. Camera 2 Engine room (viewing aft) Camera 3 Engine room (viewing forward) Camera 4 Port Main deck side deck (viewing aft) Camera 5 Starboard Main deck side deck (viewing aft) Camera 6 Tender Garage. Camera 7 Upper Deck Aft Cockpit. Camera 8 Sky Deck.
Tijssen - DC System Power monitoring and display.
Tijssen - Elecktro Marine Personal Assistance (MPA) integrated power management, boat monitoring and control system. Tijssen Master MPA 17" touchscreen display.
Tijssen - Elecktro Marine Personal Assistance (MPA) integrated power management, boat monitoring and control system. Tijssen Master MPA 19" touchscreen display in the Wheelhouse.

Tijssen - Master MPA 15" touchscreen display in the Crew Mess.
Tijssen - Master MPA 17" touchscreen display in the Tech Room.
Tijssen - Monitoring and Control of all major fluid pumps (Fuel Transfer, Black and Grey) Monitoring of status of all the main circuit breakers.
Tijssen - Monitoring and Control of engine room ventilation.
Tijssen - Monitoring and control of navigation lights.
Tijssen - Monitoring and display of DC switch gear status.
Tijssen - Monitoring exhaust temperature
Tijssen - Monitoring of Diesel fuel, fresh water, grey water and black water and Oil tank levels.
Tijssen - Monitoring of Hydraulic systems tank levels and status.
Tijssen - Monitoring of Portlight and Hatch Status.
Tijssen - Monitoring via a single float switch of bilge water level in five bilge compartments.
Tijssen - MPA Generator Control and Monitoring System Upgrade. Additional feature allowing complete control and monitoring of generator parameters and alarms via the Tijssen Touch Screen.
Tijssen - Slave MPA 15" touchscreen display
Tijssen - Slave MPA 15" touchscreen display in the Engine Room.
Tijssen - Status monitoring and control of AC switch gear.
Tijssen - Swipe card security alarm Integrated to MPA system
Two LED up lighters for navigation mast
Two Shorelines are provided for connection to the PABX and an external Ethernet Network connection



ENGINEERING UPGRADES OVER STANDARD SPECIFICATION

ABT.TRAC provides the hydraulic system for the Thruster system, Stabilisers if specified, foredeck windlasses and aft deck capstans Each engine turns a 140cc load sense hydraulic pump via a SAE-C PTO on the gearbox. A 75cc load sense hydraulic pump via a SAE-C24 volt clutched PTO on the main generator and a 75cc load sense hydraulic pump via a SAE-C24 volt clutched PTO on the second generator

Air Conditioniing - Marine Air MCG V120 Modular Chiller 4 x 120000BTU

Air Conditioning for the engine room. Two Marine Air VCD27K (54,000 Btu) Self-contained units

Air Conditioning Marine Air chilled water system to Tropical specification and with quieter running WhisperCool DC fans

Alfa Laval MIB303 Fuel cleaning centrifugal separator 240V 1 Phase 50Hz 760 l/h

Auto Troll for Transmissions for slow speed manoeuvring

Bilge pump system with primary engine room pump being the Gianneshi self priming centrifugal 400V 3 Phase 50Hz 7.5kW and a secondary (as shared with the Hydrant system) Gianneshi self priming centrifugal pump powered by an independent diesel engine located in the pump room. Both are coupled to bilge manifould valve blocks which are connected to the strum boxes throughout the boat.

MTU fitted engine direct bilge pump with strum box.

Black water holding tank is an integral GRP tank of 1450 litre capacity. Discharge via a Gianneshi 400V 3 Phase 50Hz self priming centrifugal macerating pump to either a shore facility when available or directly overboard (refer to MARPOL regulations) or the Sewage treatment.

Diesel fuel day tank is an integral GRP tank of 3,730 litre capacity with an AC transfer pump to replenish from the main tank

Diesel fuel long range overload integral GRP tank of 5,050 litre capacity

Diesel fuel main tank is an integral GRP tank of 18,700 litre capacity

Fire Hydrant primary engine room pump being the Gianneshi self priming centrifugal 400V 3 Phase 50Hz 7.5kW and a secondary Gianneshi self priming centrifugal pump powered by an independent diesel engine located in the pump room. Fire Hydrant hose station located in the pump room.

Fireboy-Xintex Fire alarm detection system. Model 90900 control panel with dedicated Apollo Smoke/heat detectors in all accomodation areas. Connected to the MPA system to repeat alarm.

Fresh water tank is an integral GRP tank, WRAS approval for portable water of 4950 litre capacity.

Pressure system via Gianneshi Duplex 400V 3 Phase 50Hz self priming pumps 100 l/m each and mounted with inlet/discharge manifold.



General Ecology Nature Pure QC in-line freshwater purifier to all independent icemakers. fitted on the stern

General Ecology Seagull IV X-2BK in-line freshwater purifier serving the galley, upper deck servery and bar faucets.

Generators - Two Kohler 80kw 400/230V 3 Phase 50Hz - 80EF0ZDJ with sound shields

Grey water from showers, wash basins and galley services will drain to Tecma transfer units 240V 1 Phase 50Hz to large diameter gravity fed pipes into the Grey water integral GRP holding tank of 1350 litre capacity. Discharge is via a Gianneshi 400V 3 Phase 50Hz self priming centrifugal macerating pump to directly over board or the black water tank to that the waste can be removed via a shore side facility when available or to the sewage treatment system.

Hot water calorifiers. Two x Surejust horizontal 200 litre stainless steel cased tanks, each with 3 x 2kW 230V 3 phase immersion heaters. 60 litre expansion tank.

Hot water circuit ring main throughout the lower and main decks with permanently running circulation pump 230V 1 Phase 50Hz - 120W

Hydraulic Bow thruster system 100HP ABT.TRAC 20

Hydraulic Stern thruster system 65HP ABT.TRAC 16

Idromar Chlorine dosing unit. Will disinfect the freshwater supply from the connection point in the starboard aft service locker or from the watermaker. fitted on the stern

Octo Marine Compact Fresh Water Softener

Portable air compressor OP20P stored in the engine room with AC 220v power supply

Reverso portable electric transfer pump Oil change system for engines gearboxes and generators with quick coupling connection pipes

Sea-Fire FM-200 H-Series fixed machinery space fire extinguishing system.

Sewage Treatment plant. ECOMar 32 (3200 l/day) 230V 1 Phase 50Hz

Trailing Pumps. Used to supply oil pressure for gearbox lubrication during windmilling situations, this may include running on one engine or when under tow

Water Maker - Idromar Water Maker 375 litres per hour



DECK UPGRADES OVER STANDARD SPECIFICATION

- 4 x Zodiac 10 Person SOLAS A Life rafts
- 7x 65mm LED lights on moulded return of garage door
- All teak decks have GREY caulking in lieu of the standard black
- Besenzoni Hydraulic three stage Telescopic stainless steel Passerella 5.8m
- Carbon fibre and polished stainless steel ensign staff suitable for 2.5 yard ensign
- Exterior AC 220v sockets in the following areas. 1. Sky Deck wet bar 2. Forepeak Locker 3. Upper Deck Aft Cockpit Served. 4. Wheelhouse Deck Seating. 5. Port Sky Deck seating 6. Stbd Sky Deck seating
- Four (4x) Summit SD345 sun loungers on Sky Deck. Upholstery colour - Sunbrella Shingles
- Hot and Cold water wash down outlets for exterior
- Hydraulically rise, fall and tilt platform with maximum lift capacity of 2000 kg
- Main Deck Aft Cockpit furniture - Fischer Mobil loose fit in lieu of standard taken from the SUITE collection.
- Marquip 8 step side mount stairway with hull fittings port and starboard with dedicated stowage
- Morton Marine Monte Carlo 3m Parasol with offset post and two sockets with dedicated stowage
- Natural teak plinths either side of tender recovery recess in tender garage aperture with teak infill. Teak features GREY caulking in lieu of black.
- Port and Starboard stainless steel stern haulers through aft bulwarks for stern too mooring or towing operations
- Radar and navigation mast in white epoxy coated finish
- Removable overhead shower stand on the platform
- Removable polished stainless steel bathing ladder with teak treads
- Retractable electric sun awning to cover the aft sky deck in Sunbrella Plus - Silver
- Sail Canopies for forward section of Sky Deck with carbon poles and integrated rope tensioning system
- Seawater pressure washing of anchor chain with outlet in each hawse pipe
- Second pair of Mooring Bollards on Forepeak
- Sky Deck - Refrigerator. Waeco Coolmatic
- Sky Deck - Techimpex Mega MBBQ 73
- Sky Deck- Icemaker Victrofrigo Classic
- Sky Deck GRP Hard top
- Special circular 10x seat dining table with lazy susan required for forward section of Sky Deck



- Stern capstan winches - two Lewmar C10 Hydraulic fitted port and starboard
- Tender diesel fuelling station with transfer pump from day tank and fuel hose reel
- Two lengths of 17.5mm high tensile galvanised studlink chain. Both at 165m long
- Two Manson Ray 210kg galvanised bow anchors
- Underwater lights. Lumishore LED underwater lights required x 21. 5x across transom and 8x either side - Lumishore TIX601-FF-W WHITE
- Upper Deck Aft - Four (4x) Summit teak chairs upholstered in Sunbrella Shingles and four (4x) Summit side tables
- Wing station control - port and starboard of main wheelhouse







Second Furuno Radar FAR2117-BB High speed X-Band 9GHz 12kW with 4' Open Scanner with Furuno processor RPU-013 and Furuno keyboard RCU-14.
Tijssen Elektro Marine Personal Assistance (MPA) integrated power management, boat monitoring and control system. Tijssen Master MPA 19" touchscreen console display.
Tijssen MPA Generator Control and Monitoring System Upgrade. Additional feature allowing complete control and monitoring of generator parameters and alarms via the Tijssen Touch Screen.
Tijssen SMS Paging facility allowing MPA alarms to be sent to up to five GSM accounts (Sim card and subscription not included)
VHF Radio - Sailor 6222 Class A VHF - DSC.
VHF Radio - Simrad RS90 Class D VHF/DSC with Handsets in Wheelhouse, Crew Mess and Emergency Steering Position. Inmarsat C with LRIT. Sailor 6110.



## NAVIGATION / BRIDGE UPGRADES OVER STANDARD SPECIFICATION

AIS - Furuno FA170 Class A AIS Transponder with GPS and VHF antenna.
Autopilot - Simrad AP70, including follow-up levers on wing stations.
Bridge Navigational Watch Alarm - Furuno BR500.
Captains helm seat has Simrad QS80 and trackball mounted in the arms
Central Navigation Display - FT Nav-vision Navigation data display with trackball and wireless keyboard.
Echo Sounder. Furuno FE700 50KHz with 50B-6B Transducer.
Electronic Chart System upgrades - Transas AIS, ARPA and Radar intergration.
Electronic Chart System - Transas Navi-Sailor 4000 ECDIS
EPIRB - McMurdo E5.
Five x Hatteland Series X 19" Maritime multi Displays for Radar, Plotter, central navigation (CCTV and second radar when specified) (Sixth standard display for the Tijssen monitoring system)
Furuno Radar FAR2837S-BB S-Band 3GHz 30Kw with 10' Open Scanner with Furuno processor RPU-013 and Furuno keyboard RCU-14.
Furuno ultra sonic wind sensor connected to the Central Navigation Display.
GPS - Furuno GP170 GPS Navigator with GPS antenna.
Handheld Portable VHF's - 2x Icom IC GM1600E and BP234.

Iridium 9555 Satellite Phone system with docking station and external passive antenna
Magnetic Compass - A magnetic compass with 6" card.
Measuring Log - Sperry Naviknot 350E with FNFI through hull sensor.
MF Radio - Sailor 6310 MF/HF 150W Radio Telephone.
MFD display per engine.
MTU - LOP-14 Local operating panel with display in engine room per engine.
MTU BlueVision Basic New Generation ships automation systems. MFD display per engine.
MTU RCS Engine propulsion control levers.
MTU Stop/start operating panel per engine
Navigation and Communication Equipment is Type Approved to comply with LY3 Large Commercial Yacht Code
Navtex Receiver - Furuno NX700B.
Panasonic PABX telephone exchange fixed Phone handset
Rudder Angle Indicator - Simrad RF45X.
Sanshin Twin Beam remote controlled Searchlight HR-1012 dual station control
SART - McMurdo S4.
Satellite Gyro Compass - Hemisphere GNSS V103.







AUDIO VISUAL UPGRADES OVER STANDARD SPECIFICATION

Audio for Main Deck Aft Cockpit - Four Sonance VP65R XT Extreme Speakers with Sonos Connect and amplifier
Audio for the Sky Deck - Six Sonance VP65R XT Extreme Speakers with Sonos Connect and amplifier
Audio for Upper Deck Aft Cockpit - Four Sonance VP65R XT Extreme Speakers with Sonos Connect and amplifier
Audio for Wheelhouse Deck - Four Sonance VP65R XT Extreme Speakers with Sonos Connect and amplifier
Captains Cabin AV - Samsung 32" HD LED Television. Fusion DVD/CD/FM Tuner with Bluetooth function. Fusion Speakers x 2. 0
Crew Mess AV - Samsung 40" HD LED 3D Television. Harmon Kardon 280 2.1-3D Blu-ray surround system. B&W Speakers x 2. B&W Sub-Woofer. Sonos Connect wired to AV Receiver. HDMI socket.
Galley - Fusion CD/FM Tuner with Bluetooth function. Fusion Speakers x 2
Integrated Sonos System allows audio streaming throughout outside areas, saloons, master stateroom and all guest cabins. Audio streaming can be via any Apple or Android equipment with Wi-fi capability. Sonos Control App needs to be installed. One Apple iPad Mini is supplied as standard. . Main Deck Saloon AV - Samsung 65" HD LED Television. Harmon Kardon 580 5.1 -3D Blu-ray surround system. B&W Speakers x 5. B&W Sub-Woofer. Sonos Connect wired to AV Receiver. HDMI and USB. . Upper Deck Saloon AV - Samsung 75" HD LED Television. Harmon Kardon 580 5.1 -3D Blu-ray surround system. B&W Speakers x 5. B&W Sub-Woofer. Sonos Connect wired to AV Receiver. HDMI and USB. . Master Stateroom AV - Samsung 55" HD LED 3D Television. Harmon Kardon 580 5.1 - 3D Blu-ray surround system. B&W Speakers x 5. B&W Sub-Woofer. Sonos Connect wired to AV Receiver. HDMI socket. . Starboard Aft Stateroom AV - Samsung 40" HD LED 3D Television. Harmon Kardon 280 2.1-3D Blu-ray surround system. B&W Speakers x 2. B&W Sub-Woofer. Sonos Connect wired to AV Receiver. HDMI socket. . Port Aft Stateroom AV - Samsung 40" HD LED 3D Television. Harmon Kardon 280 2.1-3D Blu-ray surround system. B&W Speakers x 2. B&W Sub-Woofer. Sonos Connect wired to AV Receiver. HDMI socket. . Starboard Forward Stateroom AV - Samsung 40" HD LED 3D Television. Harmon Kardon 280 2.1-3D Blu-ray surround system. B&W Speakers x 2. B&W Sub-Woofer. Sonos Connect wired to AV Receiver. HDMI socket. . Port Forward Stateroom AV - Samsung 40" HD LED 3D Television. Harmon Kardon 280 2.1-3D Blu-ray surround system. B&W Speakers x 2. B&W Sub-Woofer. Sonos Connect wired to AV Receiver. HDMI socket. . Crew Mess AV - Samsung 40" HD LED 3D Television. Harmon Kardon 280 2.1-3D Blu-ray surround system. B&W Speakers x 2. B&W Sub-Woofer. Sonos Connect wired to AV Receiver. HDMI socket. . Captains Cabin AV - Samsung 32" HD LED Television. Fusion DVD/CD/FM Tuner with Bluetooth function. Fusion Speakers x 2. 0. Each of the four Crew Cabins, the Wheelhouse and the Galley have the following Audio. Fusion CD/FM Tuner with Bluetooth function. Fusion Speakers x 2. . Audio for Main Deck Aft Cockpit - Four Sonance VP65R XT Extreme Speakers with Sonos Connect and amplifier. . Audio for Upper Deck Aft Cockpit - Four Sonance VP65R XT Extreme Speakers with Sonos Connect and amplifier. . Audio for the Sky Deck - Eight Sonance VP65R XT Extreme Speakers with Sonos Connect and amplifier. . Audio for Wheelhouse Deck - Four Sonance VP65R XT Extreme Speakers with Sonos Connect and amplifier
Main Deck Saloon AV - Samsung 65" HD LED Television on rise and fall with swivel facility. Harmon Kardon 580 5.1 -3D Blu-ray
Main Deck Saloon television upgraded to a 65" on a rise and fall mechanism with 180 degree swivel facility



Master Stateroom AV - Samsung 55" HD LED 3D Television. Harmon Kardon 580 5.1 -3D Blu-ray surround system. B&W Speakers x 5. B&W Sub-Woofer. Sonos Connect wired to AV Receiver. HDMI socket.
Port Aft Stateroom AV -Samsung 40" HD LED 3D Television. Harmon Kardon 280 2.1-3D Blu-ray surround system. B&W Speakers x 2. B&W Sub-Woofer. Sonos Connect wired to AV Receiver. HDMI socket.
Port Forward Stateroom AV - Samsung 40" HD LED 3D Television. Harmon Kardon 280 2.1-3D Blu-ray surround system. B&W Speakers x 2. B&W Sub-Woofer. Sonos Connect wired to AV Receiver. HDMI socket.
Starboard Aft Stateroom AV - Samsung 40" HD LED 3D Television. Harmon Kardon 280 2.1-3D Blu-ray surround system. B&W Speakers x 2. B&W Sub-Woofer. Sonos Connect wired to AV Receiver. HDMI socket.
Starboard Forward Stateroom AV - Samsung 40" HD LED 3D Television. Harmon Kardon 280 2.1-3D Blu-ray surround system. B&W Speakers x 2. B&W Sub-Woofer. Sonos Connect wired to AV Receiver. HDMI socket.
Terrestrial Communications and Control using a Pepwave MAX HD2 LTE 3G/4G ship to shore Wi-Fi Router. 3G, 4G Data Communications (dependant on SIM card and coverage)
Upper Deck Saloon AV - Samsung 75" HD LED Television. Harmon Kardon 580 5.1 -3D Blu-ray surround system. B&W Speakers x 5. B&W Sub-Woofer. Sonos Connect wired to AV Receiver. HDMI and USB. Satellite Decoder
Upper Deck Saloon television upgraded to a Samsung 75" LED TV in lieu of the standard 55"
Wheelhouse - Fusion CD/FM Tuner with Bluetooth function. Fusion Speakers x 2
Wi-Fi Data Communications (linked to marina Network)
Wireless network giving coverage throughout boat.





GALLEY UPGRADES OVER STANDARD SPECIFICATION

Superyacht Custom Commercial Galley Refrigeration by Frigoboat with polished stainless steel interiors - Four units giving 1440 litres fridge capacity and two units giving 646 litres freezer capacity. Increases volume and performance with remote sea water cooled refrigeration Plant

Custom integrated galley extraction. Extraction fan - Systemair KE 50-25-4 - 230V 1 Phase 50Hz with Actionair AirShield control damper. This draws air from the stainless steel galley hood, through a single rectangular duct to the exterior of the vessel

Food warming heat lamps in main deck galley

Galley waste disposal - Insinkerator

Miele KM6879 Induction hob 5 zone - 900mm

Miele M6260TC Microwave oven 46 litre capacity

Professional Appliance Miele dishwasher PG8056

Two x Miele H6460BP single convection ovens

SERVERY UPPER DECK UPGRADES OVER STANDARD SPECIFICATION

Dumb waiter linked to the lower deck servery

Miele stainless steel front Refrigerator

SERVERY MAIN DECK UPGRADES OVER STANDARD SPECIFICATION

Dumb waiter linked to the upper deck servery

Icemaker Victrofrigo Classic

Sub-Zero ICB427G -LH Built in full height Wine Cooler. 132 bottles



CREW MESS UPGRADES OVER STANDARD SPECIFICATION

Miele undercounter Refrigerator

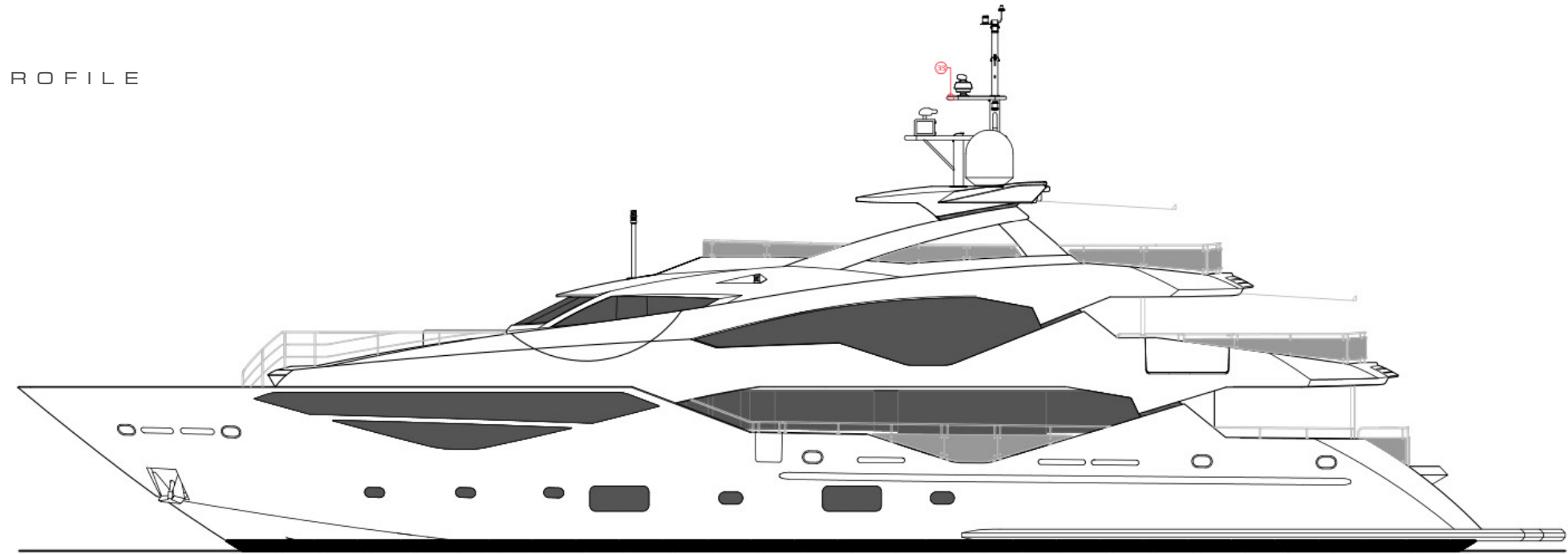
Miele 220V Slimline Dishwasher

Miele H6200BM Combination Microwave convection oven

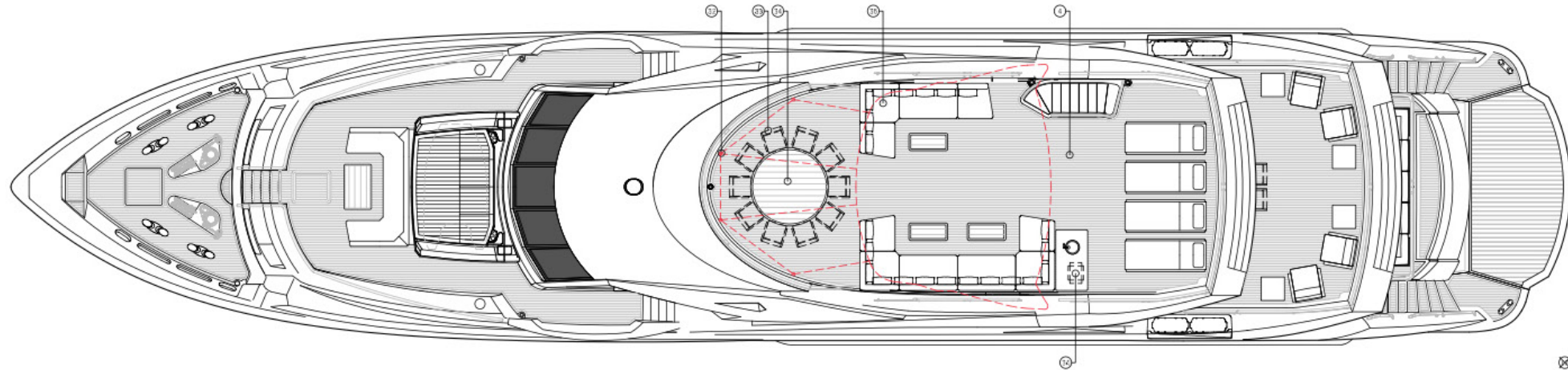




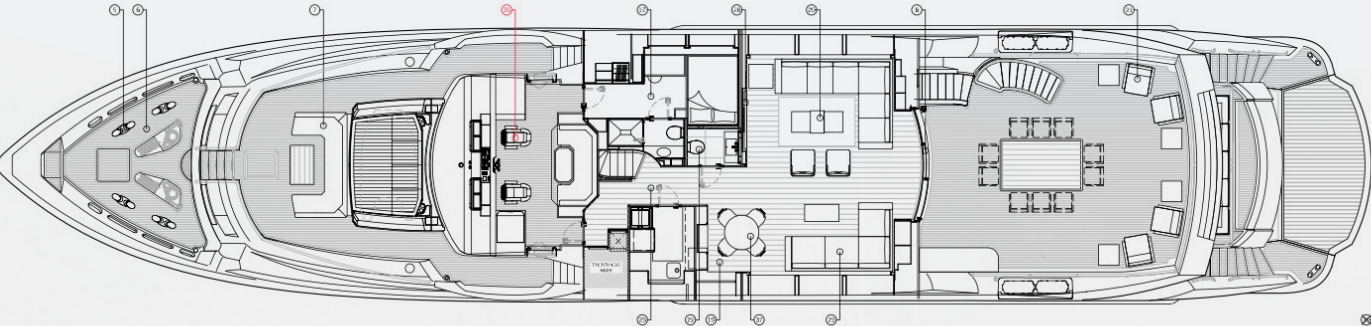
PROFILE



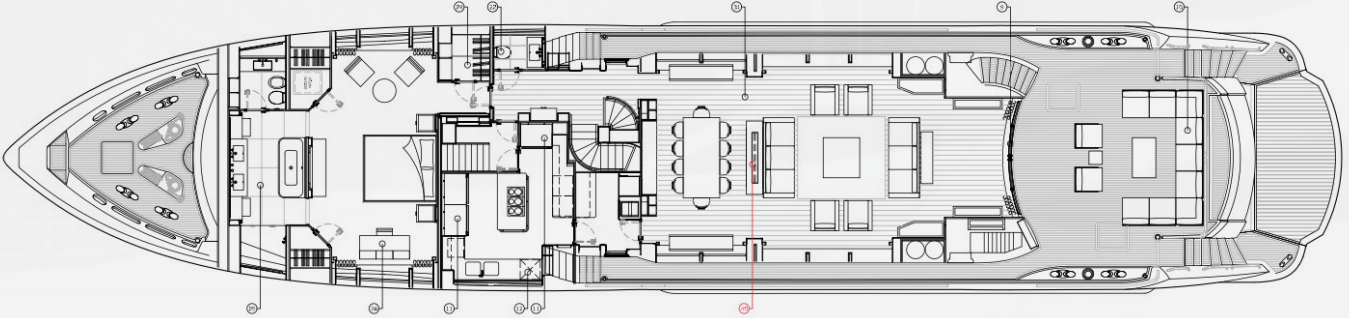
SKYDECK



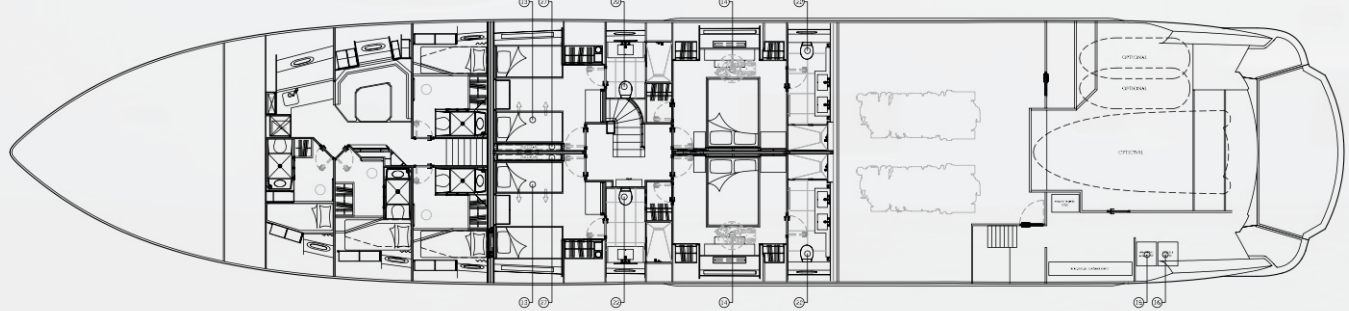
UPPER DECK



MAIN DECK



LOWER DECK



SUNSEEKER  
**ALADDIN**



# ALADDIN



**BRISTOW**  
**HOLMES**

[harry@bristow-holmes.com](mailto:harry@bristow-holmes.com)

Tel. +44 7881 29 74 75

[www.bristow-holmes.com](http://www.bristow-holmes.com)

London - Dubai - Miami - Monaco - Palma - Singapore - Sydney