

# SUNSEEKER NOAH

MAX SPEED  
29 KNOTS

CABINS  
5

YEAR  
2011

LOCATION  
SPAIN, MALLORCA

LENGTH  
30 M



# INTRODUCTION

## What the Broker Loves

- Fully EU VAT Paid
- Presents Better Than New
- Turn Key Yacht
- 5 En-Suite Cabins
- 2,000,000 Euros Refit Completed in 2021/22

Bristow-Holmes is delighted to welcome 'NOAH', a stunning Sunseeker 30 Metre Yacht built in 2011 that exemplifies luxury and performance on the high seas. Listed exclusively for sale through Bristow-Holmes, 'NOAH' offers an unparalleled yachting experience, blending elegant design with exceptional craftsmanship. Delivered in 2011 'NOAH' was used privately by a single family until 2021 when she was sold to her current owner. Following an extensive refit through 21/22 'NOAH' has been fully upgraded and serviced to the highest levels ensuring she is now as good as she was when she left the Sunseeker International shipyard when she was originally sold.

'NOAH' boasts a sleek, modern exterior designed by Sunseeker, characterized by its aerodynamic lines and robust hull. The spacious sundeck is perfect for sunbathing and entertaining, complete with a fully equipped wet bar, jacuzzi, and ample seating. The aft deck provides an ideal setting for al fresco dining with panoramic views of the sea.

Inside, 'NOAH' features a sophisticated interior with high-end finishes and a meticulous attention to detail. The main salon offers a welcoming and spacious environment with large windows, flooding the space with natural light and offering breathtaking views. The formal dining area seamlessly connects to the salon, making it perfect for both intimate dinners and larger gatherings.



SUNSEEKER  
**NOAH**



## SPECIFICATION

Name	NOAH
Price	€3,250,000 VAT PAID
Builder	Sunseeker
Model	30 Metre Yacht
Length	30 Metres
Year	2011
Location	Spain, Mallorca
Guests	12
Guest Accomodation	1 Master - 2 Double - 2 Twin's with Pullman
Crew	5
Crew Accomodation	1x Captains Cabin, 2 x Twin Crew
Exterior Designer	Sunseeker
Beam	6.9 Metres
Draft	2.09 Metres
Hull	GRP
Classification	RINA Commercial
Engines	2 x MTU 16V 2000 M94
Max Speed	29 Knots



SUNSEEKER  
**NOAH**

## COLOURS

Hull - Navy Blue  
 Hull Band - Navy Blue  
 Boot Top - Navy Blue  
 Superstructure - White  
 Cabinetry - Gloss Black American Walnut and Wenge  
 Interior Upholstery - Neutral color with varied high quality fabrics

CLICK TO SEE THE VIDEO



CLICK TO SEE THE VIRTUAL TOUR



FOR MORE INFO: <https://bristow-holmes.com/yachts/sunseeker-30-metre-yacht-noah-for-sale/>

# NOAH-REFIT 2021/2022

SWIM PLATFORM UPGRADED FOR EXTRA WEIGHT BEARING

## UPGRADES 2022

MTU engines - 9-year survey (Top end rebuild - details to follow from MTU)  
MTU - Turbos and coolant pump  
Engine sea water valve replaced port engine  
Generators - full service - sea water pipes replaced  
Watermaker membranes changed  
Water osmosis system installed - zero ppm water  
Engine manifolds removed, cleaned, replaced  
New underwater lights and power supply  
Winches serviced  
Fire/bilge pump removed, serviced, refitted  
New Boilers/hot water system  
Deckhead material refitted throughout vessel  
All bilges sanded and painted

New Exterior TV on rise and fall on sun deck  
New speakers on sun deck  
New exterior lighting throughout the vessel (lower consumption better quality)  
New illuminated side and garage lights  
New Aft deck tv and deck head mounted speakers  
New garage and aft painting  
New Music system installed in garage  
New exterior covers and cushions throughout vessel  
New exterior cameras installed throughout  
New emergency fire pump  
Sika cut and deck sanded on sundeck  
New fridge compressors and ventilation on bridge deck 2022/2023  
Interior woodworks re varnished 2022/2023

## NAVIGATION UPGRADE / NEW

2 x SIMRAD NS0 evo3S 24" MFD  
2 x SIMRAD NSS12 evo 3S MFD  
SIMRAD HALO-6 - 6ft Open-Array 25W Solid-State Radar  
2 x SonarHub Module with power cable and Ethernet cable 4.5m  
B150M - Bronze 300W Medium-Chirp Thru-Hull Depth/Temperature  
ForwardScan™ Transducer Kit (Long-Stem)  
4 x IS42 Instrument multi-purpose instrument display  
Airmar 120WX Weather Station

DST-810 Depth/Speed/Temp Sensor Bronze thru-hull housing  
GS25 Antenna with built-in rate compass  
N2KEXT-2RD - NMEA 2000® cables  
NMEA2000 Connectors - adaptors  
NMEA2000 Expansion module  
Mini PC  
Time zero navigator  
HALO24 Radar A 24" powerful 25W Solid-State Radar



## UPGRADES 2023

Air con ripped out, all new chillers, electrics, handlers, controls  
Passarella rams removed, serviced  
New teak on Passarella  
New teak on swim platform  
Aft cleats removed - re-bedded  
New Glendenning system installed  
New Air conditioning sea cock in ER  
New refrigeration sea cock and strainer  
New refrigeration pump and piping  
Gray and black water systems upgraded  
Galley/Pantry demolished - new insulation, new extraction  
All new galley and equipment including oven/hob/ steamer / Quooker  
All new Pantry and equipment including washers/dryers/dishwashers (MIELE)  
New privacy sliding door system on Main salon for noise/smell reduction  
Increased storage throughout boat  
New master cabin shower  
New carpets throughout  
New wall fabrics and blinds (electric and manual) throughout the boat  
Increased insulation in owners' cabin  
New mattresses throughout vessel  
New AV throughout the boat Smart Tvs Control 4 system along with KVH Sat plus Starlink  
Marine wireless throughout  
Saloon- 1x Samsung QLED 4k 65" Tv

Maindeck aft - 1x Samsung 4k - UE43CU8572UXXH  
Double Aft cabins- 2 x Samsung QLED 43" 4k TVs - QE43060BAU  
Master cabin - QN90AA 55" Tv  
New upholstery on main salon furniture  
All chairs and tables repainted/varnished throughout boat  
New wine fridge Main salo  
New tinting on Master windows  
New Sump pumps throughout vessel  
New sounders x 3 installed through hulls including fwd facing sounder  
New radar system installed (sea connect for details)  
New navigation system installed including new screens on bridge (Sea connect for details)  
New sofa and lounge area built on Sun deck  
New Simrad displays on flybridge  
New Autopilot installed  
New retractable awning and motor on sun deck  
New aft awning on sun deck  
Vessel polished with ceramic coating  
New 6 mtr Ribeye custom tender with 150hp Yamaha  
New crew shower/bathroom upgrades  
Crew cabins and crew mess redesigned -new storage, upholstery, bunks  
New flooring through crew/pantry/ galley  
New lines

## AVAILABLE BY SEPARATE NEGOTIATION

Jet Ski seadoo GTX new 2022.

Seabob new 2022

Ribeye SIX19 SOLAS custom tender with 150HP Yamaha



## NOAH

The yacht's accommodation includes a lavish full-beam master suite, two VIP cabins, and two twin cabins, each with en-suite facilities, ensuring utmost privacy and comfort for all guests. Each cabin is elegantly furnished, providing a serene retreat after a day of adventure.

The engines have undergone the MTU 4,0000 Hour Service in 2021/22 and as such she performs like she did the day she left the yard; 'NOAH' boasts impressive speed when required yet cruises comfortably at 10/12 knots to maximise her range and ensuring smooth and efficient cruising.

'NOAH' boasts State-of-the-art entertainment systems throughout, fully equipped galley, Water toys and tender for endless fun on the water, Upgraded Climate control systems for comfort in all weather conditions.

For a FULL LIST of works undertaken as part of her 21/22 refit please contact Bristow-Holmes.

'NOAH' is a masterpiece of nautical engineering, offering an unrivalled combination of luxury, performance, and comfort. Don't miss the opportunity to own this exquisite Sunseeker 30 Metre Yacht. For more information or to schedule a viewing, please contact Bristow-Holmes today.

Experience the pinnacle of yachting with 'NOAH', where every detail is crafted to perfection





## MASTER STATEROOM AND GUEST CABINS

Snib lock for all cabins entrance doors

Revised Master Stateroom layout with berth aft and En-suite forward, including underfloor storage area with light and socket

Master Stateroom side window blinds to be electric operation (with manual switch), Black out lined

Tinted film to main deck side windows and aft sliding doors

All carpets where applicable to be 100% Wool 'Ivory'

Upper Headboard to be Silver Mirror with a Black American Walnut - Gloss finish frame which is proud of mirror

Master Stateroom sound insulation and master En-suite

Heated polished chrome finish towel rail on timer in all guest En Suites cabins

Additional shelved storage unit on port side

Master shower cubicle bulkheads in Porcelanosa

Safe (4-brick, digital combination) in Walk-in Wardrobe (Master Stateroom), and Safe - 2 brick - with Digital lock in guest's cabins

All double AC sockets to consist of one British 3-pin and one European AC sockets are fitted beside all bedside table(s), worktops, walk-in wardrobe and dressing tables

Upgraded guest en-suite shower cubicle bulkheads in Laminam Progetto Oxide Avorio tiles in lieu of laminate



M A S T E R C A B I N









## MAIN SALOON AND DINING, GALLEY

Saloon, Dining, Galley, Main Deck Lobby, Wheelhouse (inc stair treads) & Day Head flooring Walnut

Saloon and starboard side lobby window blinds to be electric operation, blackout lined

Custom marine refrigeration (420 litre capacity) and freezer (330 litre capacity) unit in Galley with water cooled compressors in lieu of std

Gaggenau appliances in Galley consisting of: Induction Hob; Extractor; Oven, and Microwave

Jura Impressa Z7 coffee machine in polished chrome finish

Miele Professional Washing machine, Tumble dryer & dishwasher in lieu of std (stainless steel finish),

Tinted film to main deck side windows and aft sliding doors

Door from Saloon to Galley to hinge on outboard side and open into dining area

Slide-out bin to be located in unit below forward Galley sink

Step-lights located on the outsides of each stair tread pointing upwards. Red lights on steps up to Wheelhouse



## WHEELHOUSE

CCTV system with five cameras (2 x Engine Room; 1 x Aft Cockpit stern docking (ensure aft part of platform is in shot); 1 x Flybridge (located forward facing aft); 1 x Aft Cockpit general surveillance). Interfaced to dedicated 15" display in Wheelhouse, and interfaced to Navigation display at Flybridge Helm. Dedicated display (below TV) in Crew Mess. Remote monitoring facility required for CCTV system via internet

Air Conditioning - Upgraded to Tropical specification - upgraded to quieter running AHDC units

4 x double AC sockets on port side and 2 x double AC sockets on starboard side

NEW Navigation at section of Upgrade 2022

Custom rack supply hand-held VHF and GPS chargers

Multifunction unit (wireless facility) fitted inside dedicated cabinet on slide-out shelf on port side of Wheelhouse

Flir High Resolution night-vision camera fitted on navigation mast, connected to control and dedicated display in Wheelhouse, interfaced to Flybridge display and feed via cable provided to Saloon AV cabinet for future distribution

Custom bookcase on outboard starboard side

Clock and barometer in polished chrome finish to be fitted in Wheelhouse

Wheelhouse sofa upholstery in CB Chocolate Leather

Shallow chart box below starboard side chart table area





## FLYBRIDGE

Flybridge port side, aft of seating area to consist of: Custom GRP unit with exterior TV on rise, fall and rotate, with removable GRP lid to cover when not in use.

Revised wetbar forward of Flybridge, with worktop in Avonite Palermo, satin finish and raised shelf in frosted clear glass low-iron. Wetbar to consist Gagganeau Grill; Coolbox, 2 x marine custom fridge drawer units; Icemakers (Galley icemaker to be re-located to Flybridge wetbar), sink with tap, and storage cupboard

Flybridge aft sunpad moulding

Liferaft capacity increased to 2 x 12-man

Flybridge Cockpit Teak Decking

KVH M9 Satellite TV system with 3 x Sky HD decoders (including relevant HDMI cabling where applicable) (Main Saloon - fed to Flybridge, Aft Cockpit and Master Stateroom with control. One shared between lower deck guest cabins with control from the aft cabins only. Decoder in Crew Mess)

KVH M9 dummy dome for opposite side of radar arch

Flybridge high pressure water misting system installed in use

Stainless Steel finish navigation mast in lieu of powder-coated aluminium

Flybridge mid port side seating 'L' shaped GRP and mid port side seating to consist of: 'L' shaped GRP seating area with natural teak table with folding leaves (1860mm x 950mm)

Boat Covers

Flybridge Overall seating covers, Bar Stool, table, Console, Helm seat

Aft Cockpit Overall seating covers, table

Windscreen cover

Foredeck seating and Sunpad Cover

Covers for free-standing chairs, each cover for three stacked chairs



## ADDITIONAL EXTRAS

Underwater lights - Aqualuma Series 6 white LED wide angle x 20 (four across stern, eight aft each side)

Wing station controls on outboard port side of Aft Cockpit, consisting of MTU throttle controls; engine stop/start keys; thrusters joystick and Simrad follow-up lever

Air Conditioning - Upgraded to Tropical specification

Air Conditioning air handlers upgraded to quieter running AHDC units

Revised Master Stateroom layout with berth aft and En-suite forward, including underfloor storage area with light and socket

Fuel - long range fuel tank (additional 4,500 litres for total of 14,000 litres)

Four cabin lower deck layout arrangement + master Cabin at the Main Deck

Passerelle Upgrade - Polished stainless-steel finish

NEW Larger-size, single-piece aft cockpit table in high gloss teak finish with central starburst pattern and perimeter holly border on two polished stainless steel pedestals

Removable bathing ladder sockets x 4 groups required

Chocks on platform to be customer supply (being supplied directly by Williams)

CCTV system with five cameras (Details at Wheelhouse section)

Portable air compressor unit with power sockets in Garage, Foredeck & Engine Room, and hose connection from engine room to garage with sign located beside outlet saying

Generators Upgraded to Two Kohler 50kw 50Hz

Hydraulics - Trac Star Digital fin stabiliser system

Shorepower converter 75kVA in lieu of Isolation Transformer

Separ fuel polishing system

Hydraulics - optional stern thruster

Storage cage to be fitted above each engine, ensure cage has catch to secure doors closed. Overhead lighting to be fitted to each side of storage cage

Water softener for domestic water system

Idromar watermaker upgraded to MC5S model (230 litres per hour)

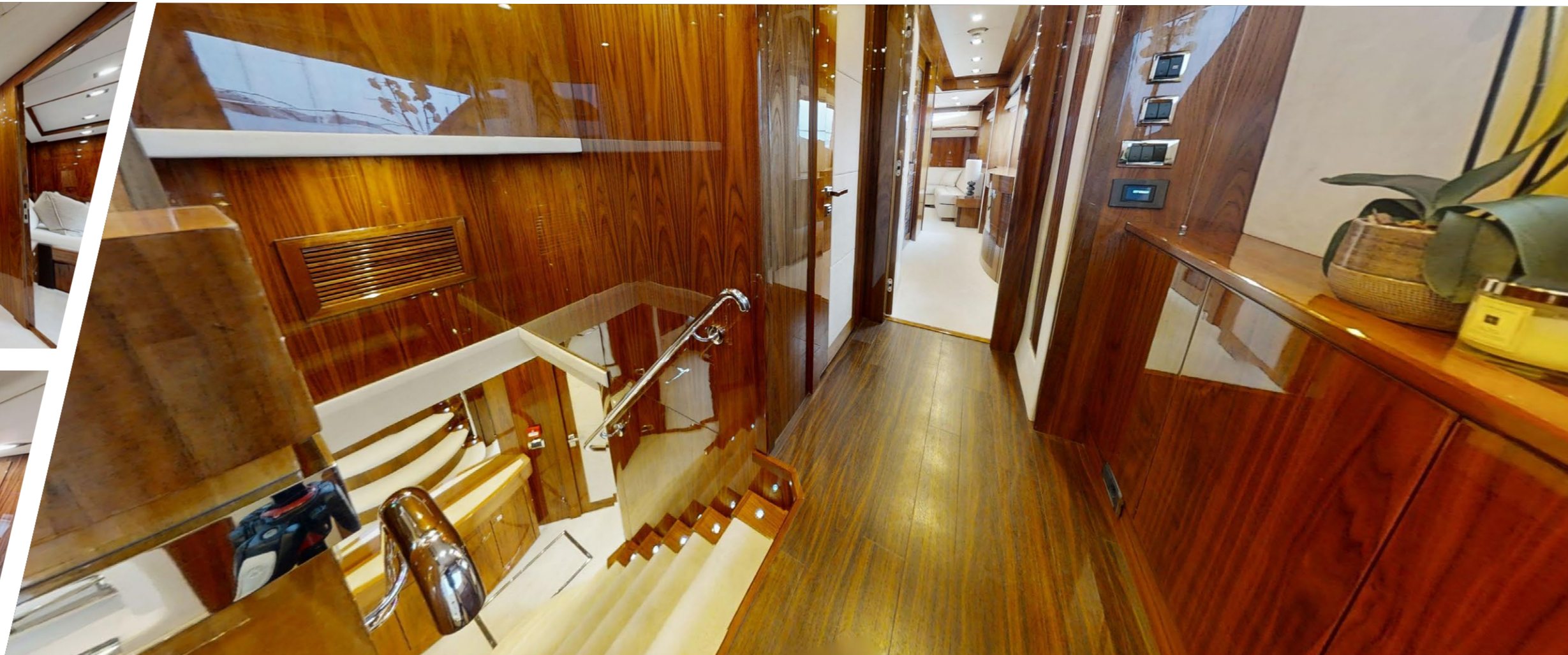
Overhead shower to be located on underside of garage door with mixer tap fitting on side of garage moulding

Walnut flooring at Saloon, Dining, Galley, Main Deck Lobby, Wheelhouse (inc stair treads) & Day Head

Free-standing chairs in marine walnut gloss finish for Cockpit and Flybridge deck.

Back American Walnut interior wood finish

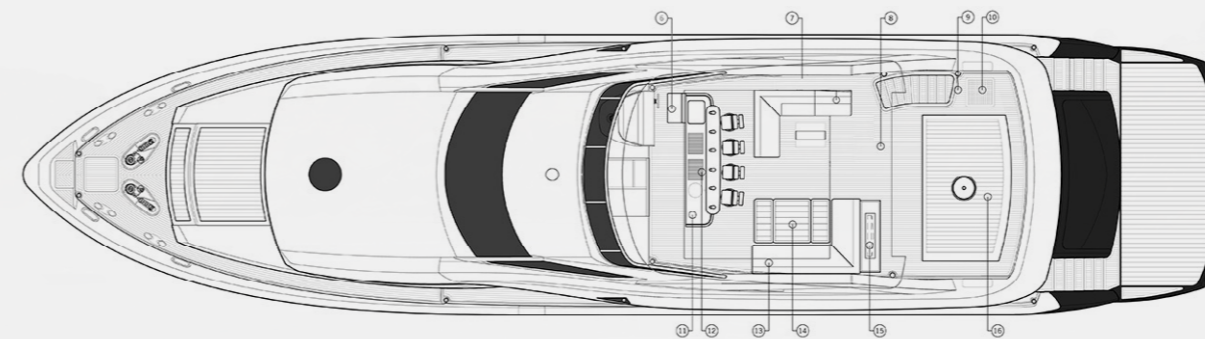
Stainless steel trimmed access hatches required for all applicable bilge access compartments (excluding stabiliser compartments)



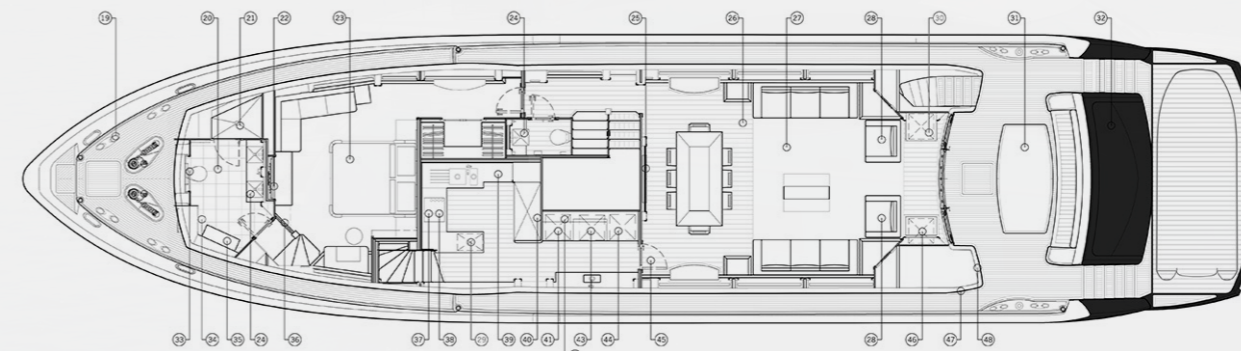
SIDE PROFILE



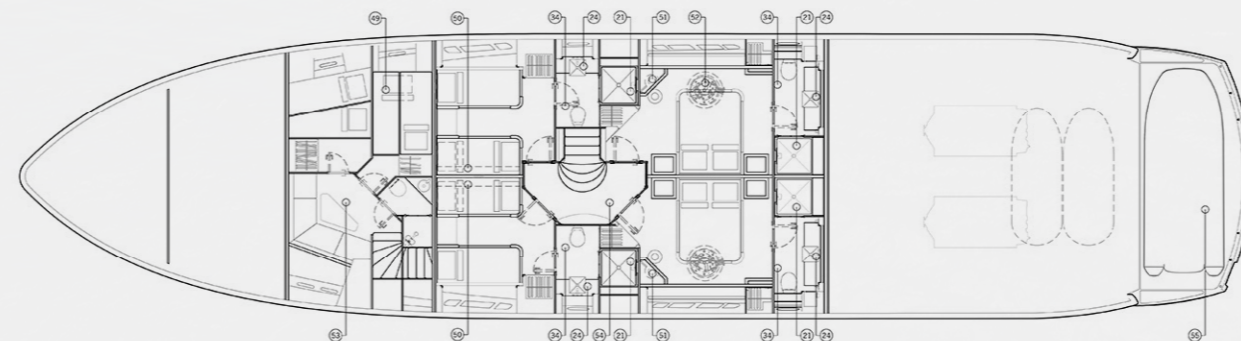
FLY BRIDGE



MAIN DECK



LOWER DECK



THE LAST NAME IN **YACHTING**

SUNSEEKER  
**NOAH**

# NOAH



**BRISTOW  
HOLMES**

[harry@bristow-holmes.com](mailto:harry@bristow-holmes.com)

Tel. +44 7881 29 74 75

[www.bristow-holmes.com](http://www.bristow-holmes.com)

London - Dubai - Miami - Monaco - Palma - Singapore - Sydney